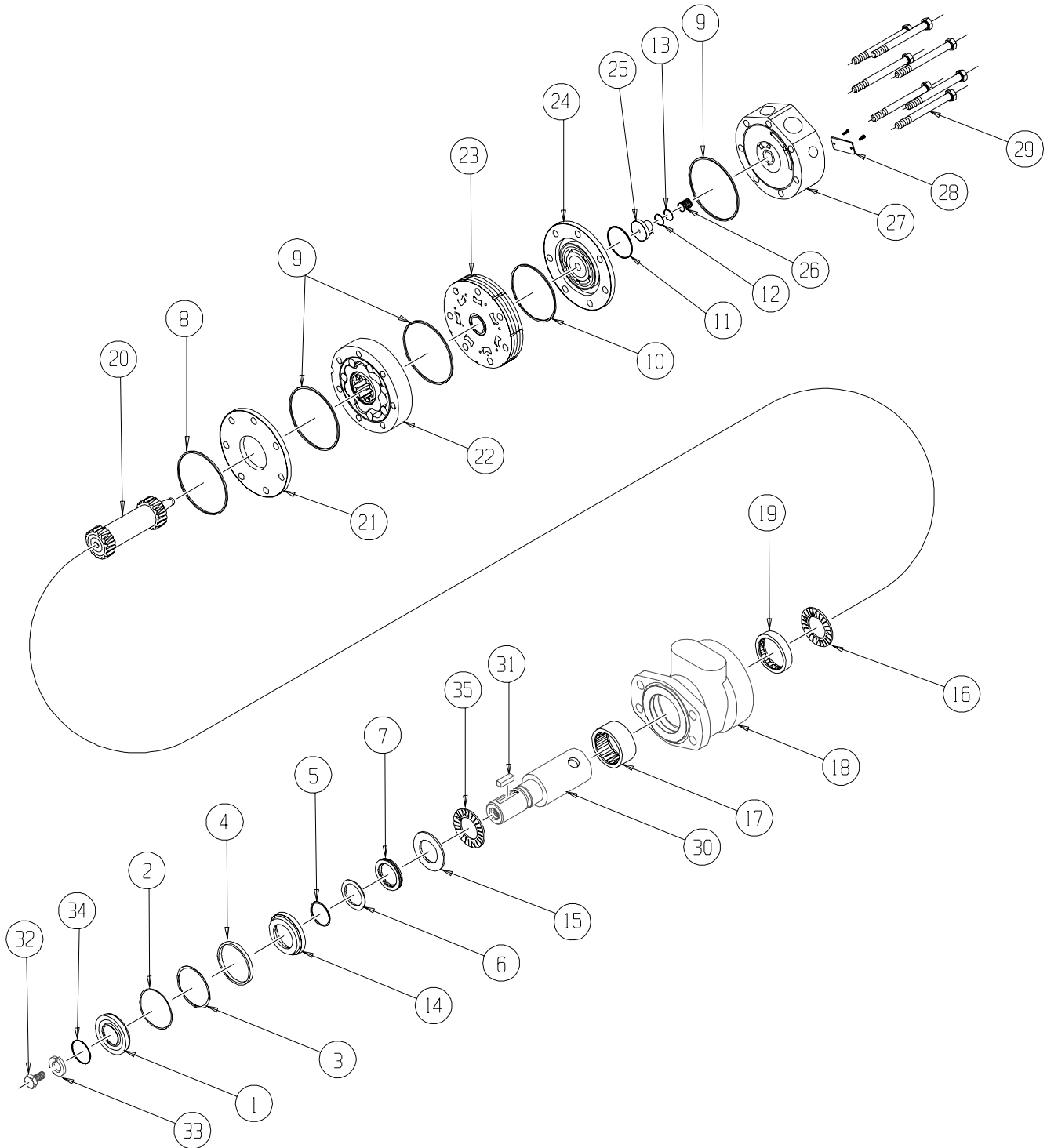


DR (600) Series



DR (600) SERIES MOTOR COMPONENTS

SEAL KIT 600555000

DESCRIPTION	EXP.VIEW ITEM #	KIT
DUST SEAL	1	
SPLIT WIRE RING	2	
METAL BACKUP SHIM	3	ITEMS #1-13
HIGH PRESSURE SEAL	4	INCLUDED IN
METAL BACKUP SHIM	5	SEAL KIT
POLYAMIDE SEAL	6	600555000
SHAFT SEAL	7	
REAR HOUSING SEAL	8	
BODY SEALS (3)	9	
MANIFOLD SEAL	10	
COMMUTATOR SEAL	11	
O-RING SEAL	12	
TEFLON BACKUP SEAL	13	
SEAL CARRIER	14	ITEMS #14-15
THRUST WASHER	15	INCLUDED IN SEAL KIT
		500444003

MISCELLANEOUS KITS

DESCRIPTION	EXP. VIEW ITEM #	KIT
REAR THRUST BEARING	16	500018059
FRONT HOUSING BEARING (1" WIDE)	17	500018003
REAR HOUSING BEARING (.5" WIDE)	19	500018002
DIVIDER PLATE	21	500012004
MANIFOLD	23	700668002
COMMUTATOR ASSEMBLY	24	700668003
ENDCOVER PISTON	25	700668004
PISTON SPRING	26	700018046
FRONT THRUST BEARING	35	500018252
1000 PSI RELIEF VALVE	NOT SHOWN	500018228
2000 PSI RELIEF VALVE	NOT SHOWN	500018231
3000 PSI RELIEF VALVE	NOT SHOWN	500018221
7/8" O-RING PORT PLUG	NOT SHOWN	700018021
1.00-20 UNEF SLOTTED NUT	NOT SHOWN	500449304
1.00-20 UNEF SOLID NUT	NOT SHOWN	500449303
1.00-20 UNEF LOCK NUT	NOT SHOWN	300339303P

ROTORS, DRIVE LINKS, AND BOLTS

WHEN CHANGING MOTOR DISPLACEMENTS, A MATCHING ROTOR, DRIVE LINK AND BOLT SET KIT MUST BE ORDERED

EXPLODED VIEW ITEM #	22	22	20	29
DISPLACEMENT	STANDARD ROTOR KIT	FREETURN ROTOR KIT	DRIVE LINK KIT	BOLT SET KIT
200	500167004	500167011	600140012	700664012
260	500227000	500227004	600140016	700664019
300	500247005	500247011	600140019	700664025
350	500207000	500207004	600140027	700665028
375	500307005	500307011	600140025	700664028
470	500357003	500357005	600140027	700665028
540	500407005	500407011	600140033	700665033
750	500607005	500607011	600140046	700665046

HOUSING KITS

(EXPLODED VIEW ITEM #18)

STANDARD HOUSING KITS INCLUDE THE FRONT BEARING (#17) AND THE REAR BEARING (#19) INSTALLED IN THE HOUSING

DESCRIPTION	HOUSING KIT
#W2 & W8- WHEEL MOUNT FLANGE	500130723
#A2 & A8- 4-HOLE SAE "A" STYLE	500130823
#K2 & K8- WHEEL MOUNT WITH BRAKE MOUNT	500131123
#A0 & A7- 2-HOLE SAE "A" STYLE	500131623
#A4 & A9- 6-HOLE SAE "A" STYLE	500131823
*NOTE- ALL HOUSINGS REQUIRE THE USE OF (2 7/8" O-RING PORT PLUGS- SEE MISC. KITS ABOVE FOR KIT NUMBER.	

SHAFTS AND RELATED COMPONENTS KITS

SHAFT KITS COME WITH RELATED SHAFT COMPONENTS (i.e. keys, nuts, etc)

TO ORDER INDIVIDUAL SHAFT COMPONENTS (i.e. keys, nuts, bolts, washers or wire rings) USE THE KIT NUMBER FOR EACH INDIVIDUAL PART

EXPLODED VIEW ITEM #	30	31	NOT SHOWN	32	33	34
DESCRIPTION	SHAFT KIT	KEY KIT	NUT KIT	BOLT KIT	WASHER KIT	WIRE RING KIT
#02- 6-B SPLINE	500011600	---	---	---	---	---
#22- 1-1/4" TAPERED	500011300	500449101	---	---	---	---
#20- 1-1/4" STRAIGHT	500011200	500449102	SEE MISC.	500449301	500449302	500449201
#23- 14 TOOTH SPLINE	500011101	---	KITS LIST	---	---	500449201
#06- 1" STRAIGHT	500011201	500449100	ABOVE	---	---	---
#12- 25MM STRAIGHT	500011109	500449104	---	---	---	---
#24- 19 TOOTH SPLINE	500011102	---	---	---	---	500449201
#21- 32MM STRAIGHT	500011203	500449103	---	---	---	500449201

ENDCOVER KITS

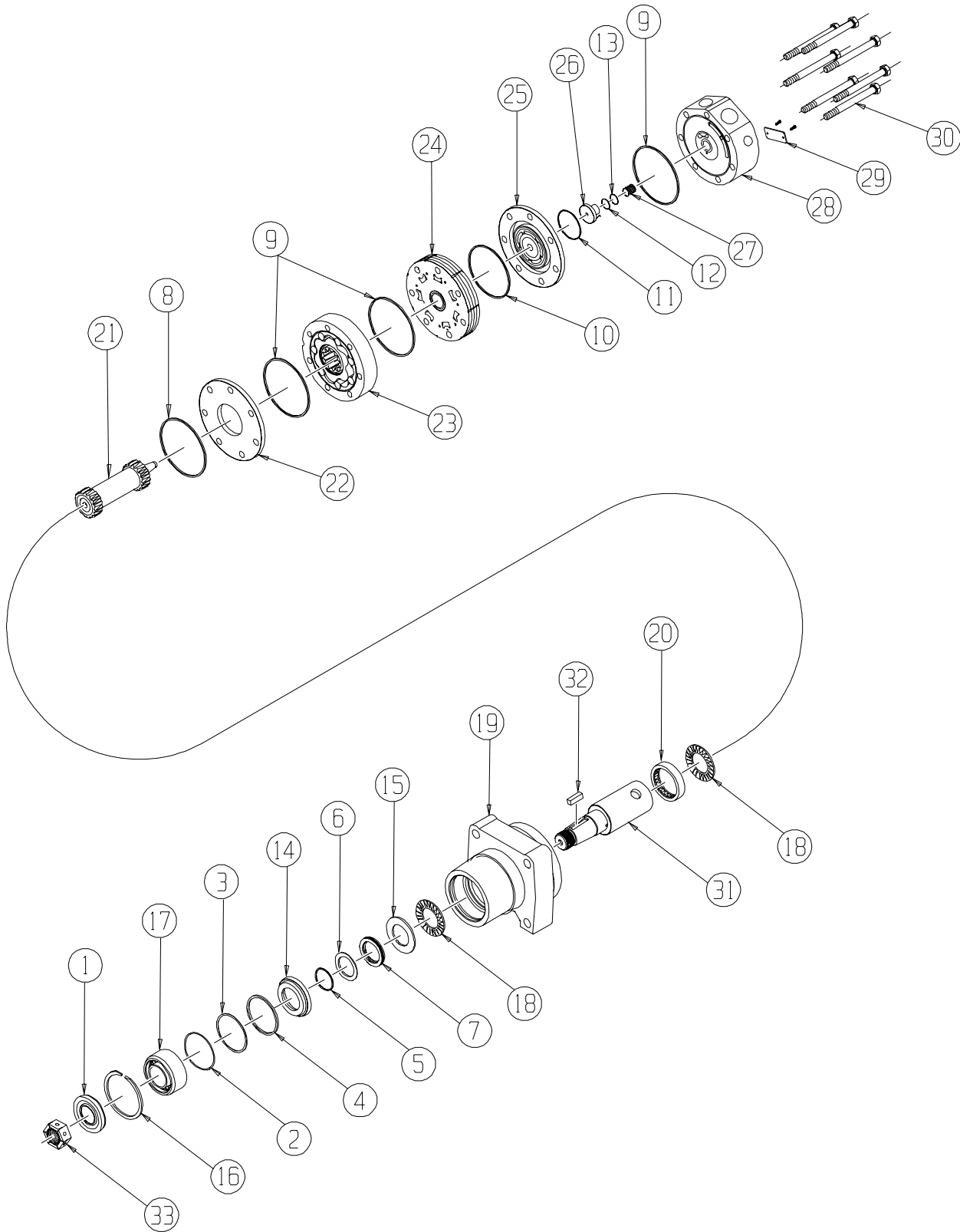
(EXPLODED VIEW ITEM #27)

ENDCOVER KITS COME ASSEMBLED WITH EXPLODED VIEW ITEMS # 12, 13, 25 & 26

TO ORDER A RELIEF VALVE FOR THE VALVE CAVITY ENDCOVERS, SEE THE MISCELLANEOUS KITS LISTING ABOVE FOR RELIEF VALVE KIT #

DESCRIPTION	STANDARD ENDCOVER KIT	VALVE CAVITY ENDCOVER KIT	INTERNAL DRAIN ENDCOVER KIT	VALVE CAVITY & INTERNAL DRAIN ENDCOVER KIT
#1- 7/8" O-RING REAR PORTS	700160000	700160000R	700160000D	700160000DR
#3- MANIFOLD PORTS, D-SHAPED	---	---	700160003D	---
#5- 1-1/16" O-RING RADIAL PORTS	700160005	700160005R	700160005D	700160005DR
#2- 3/4" BSP.F RADIAL PORTS	700160007	700160007R	700160007D	700160007DR
#6- 1-1/16" O-RING PARALLEL PORTS	700160008	700160008R	---	---
#7- 3/4" BSP.F PARALLEL PORTS	700160009	---	---	---

DR (620) Series



DR (620) SERIES MOTOR COMPONENTS

SEAL KIT 600555000

DESCRIPTION	EXP.VIEW ITEM #	KIT
DUST SEAL	1	
SPLIT WIRE RING	2	
METAL BACKUP SHIM	3	ITEMS #1-13
HIGH PRESSURE SEAL	4	INCLUDED IN
METAL BACKUP SHIM	5	SEAL KIT
TEFLON BACKUP SEAL	6	600555000
SHAFT SEAL	7	
HOUSING SEAL	8	
BODY SEALS (3)	9	
MANIFOLD SEAL	10	
COMMUTATOR SEAL	11	
O-RING SEAL	12	
TEFLON BACKUP SEAL	13	
SEAL CARRIER	14	ITEMS #14-15
THRUST WASHER	15	INCLUDED IN SEAL KIT 500444003

MISCELLANEOUS KITS

DESCRIPTION	EXP. VIEW ITEM #	KIT
RETAINING SNAP RING	16	500018141
72MM BEARING	17	500018098
THRUST BEARING	18	500018059
REAR HOUSING BEARING	20	500018002
DIVIDER PLATE	22	500012004
MANIFOLD	24	700668002
COMMUTATOR ASSEMBLY	25	700668003
ENDCOVER PISTON	26	700668004
PISTON SPRING	27	700018046
1000 PSI RELIEF VALVE	NOT SHOWN	500018228
2000 PSI RELIEF VALVE	NOT SHOWN	500018231
3000 PSI RELIEF VALVE	NOT SHOWN	500018221
7/8" O-RING PORT PLUG	NOT SHOWN	700018021
1.00-20 UNEF SLOTTED NUT	NOT SHOWN	500449304
1.00-20 UNEF SOLID NUT	NOT SHOWN	500449303
1.00-20 UNEF PACK NUT	NOT SHOWN	300339303P

ROTORS, DRIVE LINKS, AND BOLTS

WHEN CHANGING MOTOR DISPLACEMENTS, A MATCHING ROTOR, DRIVE LINK AND BOLT SET KIT MUST BE ORDERED

EXPLODED VIEW ITEM #	23	23	21	30
DISPLACEMENT	STANDARD ROTOR KIT	FREETURN ROTOR KIT	DRIVE LINK KIT	BOLT SET KIT
200	500167004	500167011	600140012	700664012
260	500227000	500227004	600140016	700664019
300	500247005	500247011	600140019	700664025
350	500207000	500207004	600140027	700665028
375	500307005	500307011	600140025	700664028
470	500357003	500357005	600140027	700665028
540	500407005	500407011	600140033	700665033
750	500607005	500607011	600140046	700665046

HOUSING KITS

(EXPLODED VIEW ITEM #19)

STANDARD HOUSING KITS INCLUDE THE FRONT BEARING (#17), REAR BEARING (#20), RETAINING RING (#16), & DUST SEAL (#1) INSTALLED IN THE HOUSING.

DESCRIPTION	HOUSING KIT
#W2 & W8- WHEEL MOUNT FLANGE	500130928
#A4 & A9- 6-HOLE SAE "A" STYLE	500135228
*NOTE- ALL HOUSINGS REQUIRE THE USE OF (2 7/8" O-RING PORT PLUGS- SEE MISC. KITS ABOVE FOR KIT NUMBER.	

SHAFTS AND RELATED COMPONENTS KITS

SHAFT KITS COME WITH RELATED SHAFT COMPONENTS (i.e. keys, nuts, etc

TO ORDER INDIVIDUAL SHAFT COMPONENTS (i.e. keys, nuts, bolts, washers or wire rings) USE THE KIT NUMBER FOR EACH INDIVIDUAL PART

EXPLODED VIEW ITEM #	31	32	33	NOT SHOWN	NOT SHOWN	NOT SHOWN
DESCRIPTION	SHAFT KIT	KEY KIT	NUT KIT	BOLT KIT	WASHER KIT	WIRE RING KIT
#25- 1-1/4" TAPERED	500011302	500449101		---	---	---
#07- 1-1/4" STRAIGHT	500011204	500449102	SEE MISC.	500449301	500449302	500449201
#09- 14 TOOTH SPLINE	500011107	---	KITS LIST	---	---	500449201
#08- 32MM STRAIGHT	500011205	500449103	ABOVE	---	---	500449201
#03- 6-B SPLINE	500011602	---		---	---	---
#15- 1" STRAIGHT	500011206	500449100		---	---	---

ENDCOVER KITS

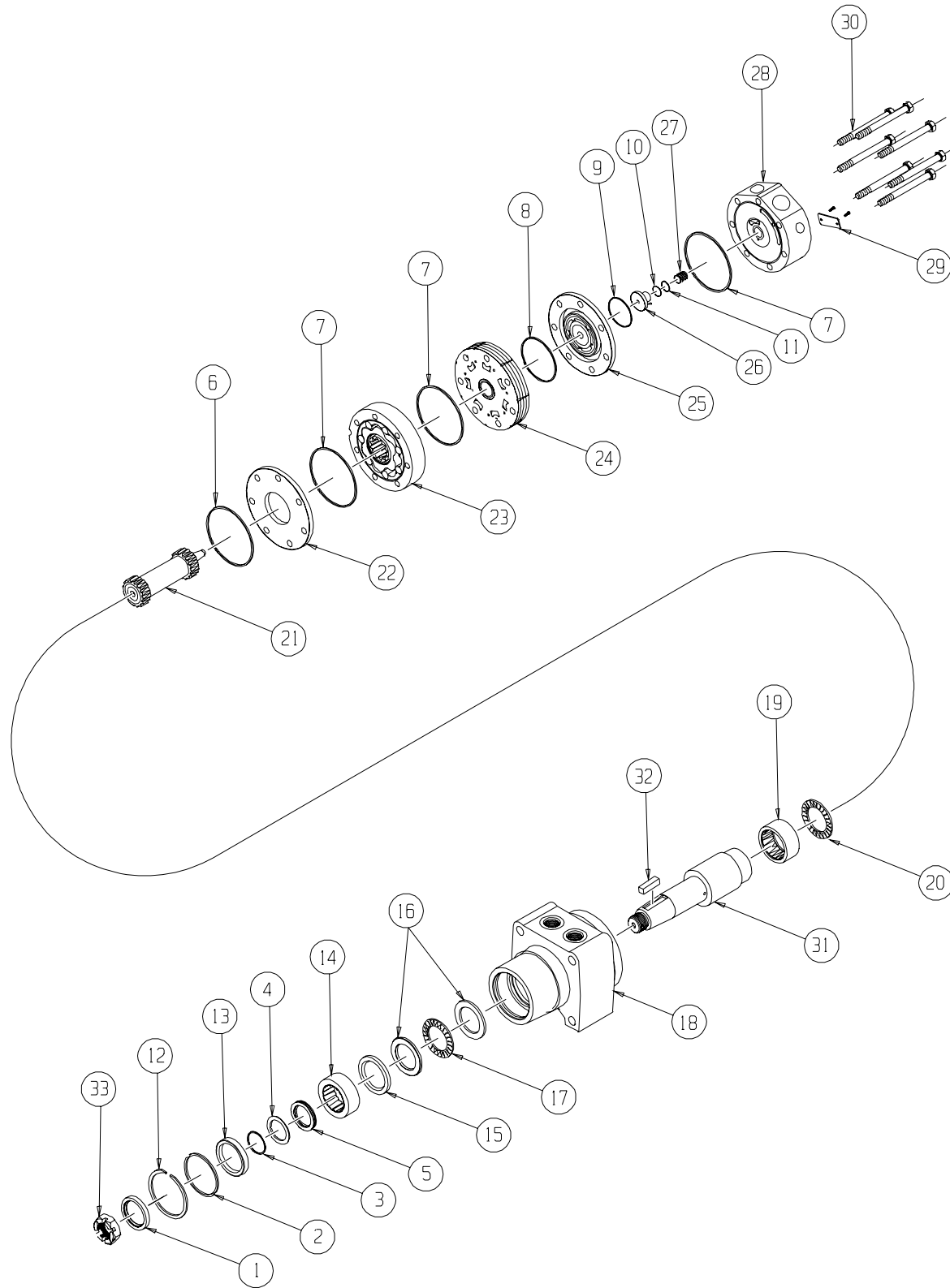
(EXPLODED VIEW ITEM #28)

ENDCOVER KITS COME ASSEMBLED WITH EXPLODED VIEW ITEMS # 12, 13, 26 & 27

TO ORDER A RELIEF VALVE FOR THE VALVE CAVITY ENDCOVERS, SEE THE MISCELLANEOUS KITS LISTING ABOVE FOR RELIEF VALVE KIT #

DESCRIPTION	STANDARD ENDCOVER	VALVE CAVITY ENDCOVER KIT	INTERNAL DRAIN ENDCOVER KIT	VALVE CAVITY & INTERNAL DRAIN ENDCOVER KIT
#1- 7/8" O-RING REAR PORTS	700160000	700160000R	700160000D	700160000DR
#3- MANIFOLD PORTS, D-SHAPED	---	---	700160003D	---
#5- 1-1/16" O-RING RADIAL PORTS	700160005	700160005R	700160005D	700160005DR
#2- 3/4" BSP.F RADIAL PORTS	700160007	700160007R	700160007D	700160007DR
#6- 1-1/16" O-RING PARALLEL PORTS	700160008	700160008R	---	---
#7- 3/4" BSP.F PARALLEL PORTS	700160009	---	---	---

DR (630) Series



DR (630) SERIES MOTOR COMPONENTS

SEAL KIT 600555100

DESCRIPTION	EXP.VIEW ITEM #	KIT
DUST SEAL	1	
HIGH PRESSURE SEAL	2	
METAL BACKUP SHIM	3	ITEMS #1-11
TEFLON BACKUP SEAL	4	INCLUDED IN
SHAFT SEAL	5	SEAL KIT
REAR HOUSING SEAL	6	600555100
BODY SEALS (3)	7	
MANIFOLD SEAL	8	
COMMUTATOR SEAL	9	
O-RING SEAL	10	
TEFLON BACKUP SEAL	11	

MISCELLANEOUS KITS

DESCRIPTION	EXP. VIEW ITEM #	KIT
RETAINING SNAP RING	12	500018249
SEAL CARRIER	13	500018238
1.5" BEARING	14	500018242
BEARING SPACER	15	500018248
THRUST WASHER	16	700018041
FRONT THRUST BEARING	17	700018033
REAR HOUSING BEARING	19	700018012
REAR THRUST BEARING	20	500018059
DIVIDER PLATE	22	500012004
MANIFOLD	24	700668002
COMMUTATOR ASSEMBLY	25	700668003
ENDCOVER PISTON	26	700668004
PISTON SPRING	27	700018046
7/8" O-RING PORT PLUG	NOT SHOWN	700018021
1000 PSI RELIEF VALVE	NOT SHOWN	500018228
2000 PSI RELIEF VALVE	NOT SHOWN	500018231
3000 PSI RELIEF VALVE	NOT SHOWN	500018221
1.00-20 UNEF SLOTTED NUT	33	500449304
1.00-20 UNEF SOLID NUT	33	500449303
1.00-20 UNEF PACK NUT	33	300339303P
1.125-18 UNEF SLOTTED NUT	33	700018038
1.125-18 UNEF SOLID NUT	33	700018054
M24 X 1.5 SLOTTED HEX NUT (#46)	33	500449306

ROTORS, DRIVE LINKS, AND BOLTS

WHEN CHANGING MOTOR DISPLACEMENTS, A MATCHING ROTOR, DRIVE LINK AND BOLT SET KIT MUST BE ORDERED

EXPLODED VIEW ITEM #	23	23	21	30
DISPLACEMENT	STANDARD ROTOR KIT	FREETURN ROTOR KIT	DRIVE LINK KIT	BOLT SET KIT
200	500167004	500167011	600140012	700664012
260	500227000	500227004	600140016	700664019
300	500247005	500247011	600140019	700664025
350	500207000	500207004	600140027	700665028
375	500307005	500307011	600140025	700664028
470	500357003	500357005	600140027	700665028
540	500407005	500407011	600140033	700665033
750	500607005	500607011	600140046	700665046

HOUSING KITS

(EXPLODED VIEW ITEM #18)

STANDARD HOUSING KITS INCLUDE THE REAR BEARING (#19) INSTALLED IN THE HOUSING

DESCRIPTION	HOUSING KIT
#W2 & W8- WHEEL MOUNT	500136728
*NOTE- THIS HOUSING REQUIRES THE USE OF (2) 7/8" O-RING PORT PLUGS- SEE MISC. KITS ABOVE FOR KIT NUMBER.	

SHAFTS AND RELATED COMPONENTS KITS

SHAFT KITS COME WITH RELATED SHAFT COMPONENTS (i.e. keys, nuts, etc)

TO ORDER INDIVIDUAL SHAFT COMPONENTS (i.e. keys, nuts, bolts, washers or wire rings) USE THE KIT NUMBER FOR EACH INDIVIDUAL PART

EXPLODED VIEW ITEM #	31	32	33	NOT SHOWN
DESCRIPTION	SHAFT KIT	KEY KIT	NUT KIT	WIRE RING KIT
#31- 1-1/2" TAPERED	500011216	500449105	SEE MISC.	---
#22- 1-1/4" TAPERED	500011300	500449101	KITS LIST	---
#30- 1-1/2" STRAIGHT	500011218	300339105	ABOVE	500449200
#28- 35MM TAPERED	500011310	500449104		---

ENDCOVER KITS

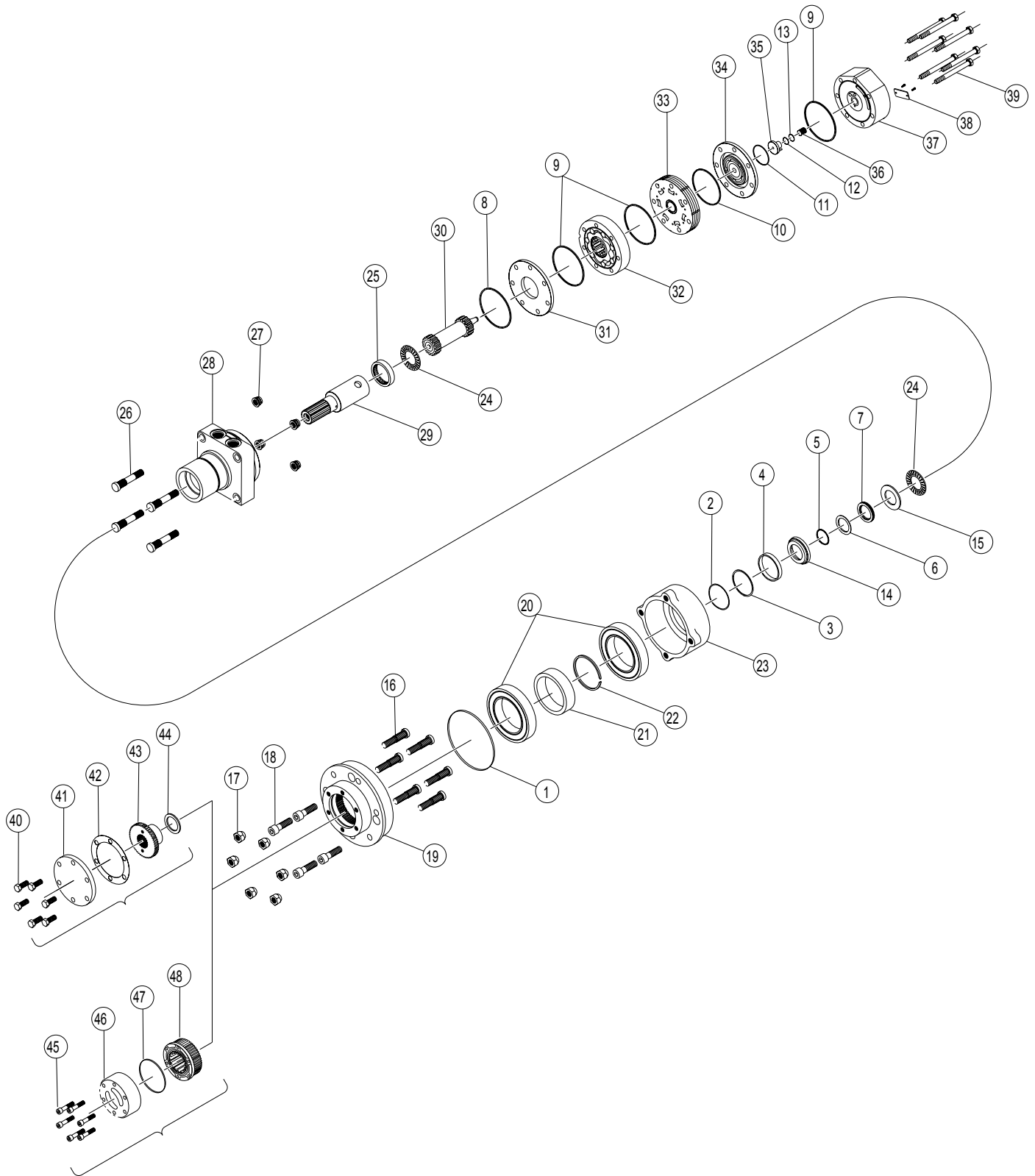
(EXPLODED VIEW ITEM #28)

ENDCOVER KITS COME ASSEMBLED WITH EXPLODED VIEW ITEMS # 10, 11, 26 & 27

TO ORDER A RELIEF VALVE FOR THE VALVE CAVITY RELIEF PORT ENDCOVERS, SEE THE MISCELLANEOUS KITS LISTING ABOVE FOR RELIEF VALVE KIT #

DESCRIPTION	STANDARD ENDCOVER KIT	VALVE CAVITY ENDCOVER KIT	INTERNAL DRAIN ENDCOVER KIT	VALVE CAVITY & INTERNAL DRAIN ENDCOVER KIT
#1- 7/8" O-RING REAR PORTS	700160000	700160000R	700160000D	700160000DR
#3- MANIFOLD PORTS, D-SHAPED	---	---	700160003D	---
#5- 1-1/16" O-RING RADIAL PORTS	700160005	700160005R	700160005D	700160005DR
#2- 3/4" BSP.F RADIAL PORTS	700160007	700160007R	700160007D	700160007DR
#6- 1-1/16" O-RING PARALLEL PORTS	700160008	700160008R	---	---
#7- 3/4" BSP.F PARALLEL PORTS	700160009	---	---	---

DR (640) Series



DR (640) SERIES MOTOR COMPONENTS

SEAL KIT 70066252

DESCRIPTION	EXP.VIEW ITEM #	KIT
FLANGE SEAL	1	ITEMS #1-13,42 INCLUDED IN SEAL KIT PT666252
WIRE RING	2	
METAL BACKUP SHIM	3	
HIGH PRESSURE SEAL	4	
METAL BACKUP SHIM	5	
TEFLON BACKUP SEAL	6	
SHAFT SEAL	7	
REAR HOUSING SEAL	8	
BODY SEALS (3)	9	
MANIFOLD SEAL	10	
COMMUTATOR SEAL	11	
O-RING SEAL	12	
TEFLON BACKUP SEAL	13	
PAPER GASKET	42	
SEAL CARRIER	14	ITEMS #14-15 INCLUDED IN SEAL KIT 500444003
THRUST WASHER	15	

MISCELLANEOUS KITS

DESCRIPTION	EXP. VIEW ITEM #	KIT
STUD	16	500018081
LUG NUT	17	500018151
(4) CAPSCREWS	18	500018086
WHEEL FLANGE	19	500013035
125MM BEARING	20	500018095
BEARING SPACER	21	500018194
THRUST RING	22	500018062
BEARING HUB	23	500013055
THRUST BEARING	24	500018059
REAR HOUSING BEARING	25	500018002
PLANETARY MOUNT STUD	26	500018081
MOUNTING NUT	27	500018112
DIVIDER PLATE	31	500012004
MANIFOLD	33	700668002
COMMUTATOR ASSEMBLY	34	700668003
ENDCOVER PISTON	35	700668004
PISTON SPRING	36	700018046
DRIVER COVER SCREWS (6)	40	500018085
DRIVER COVER	41	700018001
DRIVER	43	500018179
WARN HUB ASSEMBLY	44 - 47	500018099
7/8" O-RING PORT PLUG	NOT SHOWN	700018021

ROTORS, DRIVE LINKS, AND BOLTS

WHEN CHANGING MOTOR DISPLACEMENTS, A MATCHING ROTOR, DRIVE LINK AND BOLT SET KIT MUST BE ORDERED

EXPLODED VIEW ITEM #	32	32	30	39
DISPLACEMENT	STANDARD ROTOR KIT	FREETURN ROTOR KIT	DRIVE LINK KIT	BOLT SET KIT
200	500167004	500167011	600140012	700664012
260	500227000	500227004	600140016	700664019
300	500247005	500247011	600140019	700664025
350	500207000	500207004	600140027	700665028
375	500307005	500307011	600140025	700664028
470	500357003	500357005	600140027	700665028
540	500407005	500407011	600140033	700665033
750	500607005	500607011	600140046	700665046

HOUSING KITS (EXPLODED VIEW ITEM #28)

STANDARD HOUSING KITS INCLUDE REAR BEARING (#25) INSTALLED IN THE HOUSING.

DESCRIPTION	HOUSING KIT
#W2 & W8- SETBACK W/ 7/8" O-RING	500131023
*NOTE- ALL HOUSINGS REQUIRE THE USE OF (2) 7/8" O-RING PORT PLUGS- SEE MISC. KITS ABOVE FOR KIT NUMBER.	

INTERNAL SHAFT

SHAFT KITS COME WITH RELATED SHAFT COMPONENTS (i.e. keys, nuts, etc.)

EXPLODED VIEW ITEM #	29
DESCRIPTION	SHAFT KIT
#24- 19 TOOTH SPLINED	500011102

ENDCOVER KITS (EXPLODED VIEW ITEM #37)

ENDCOVER KITS COME ASSEMBLED WITH EXPLODED VIEW ITEMS # 12, 13, 35 & 36.

TO ORDER A RELIEF VALVE FOR THE RELIEF PORT ENDCOVERS, SEE THE MISCELLANEOUS KITS LISTING ABOVE FOR RELIEF VALVE KIT #S.

DESCRIPTION	STANDARD ENDCOVER KIT	RELIEF PORT ENDCOVER KIT	SHUTTLE VALVE ENDCOVER KIT	RELIEF PORT & SHUTTLE VALVE ENDCOVER KIT
#1- 7/8" O-RING REAR PORTS	700160000	700160000R	700160000D	700160000DR
#3- MANIFOLD PORTS, D-SHAPED	---	---	700160003D	---
#5- 1-1/16" O-RING RADIAL PORTS	700160005	700160005R	700160005D	700160005DR
#2- 3/4" BSP.F RADIAL PORTS	700160007	700160007R	700160007D	700160007DR
#6- 1-1/16" O-RING PARALLEL PORTS	700160008	700160008R	---	---
#7- 3/4" BSP.F PARALLEL PORTS	700160009	---	---	---

White Drive Products, Inc. Phone (270) 885-1110 Fax (270) 886-8462

Rev. 1.04