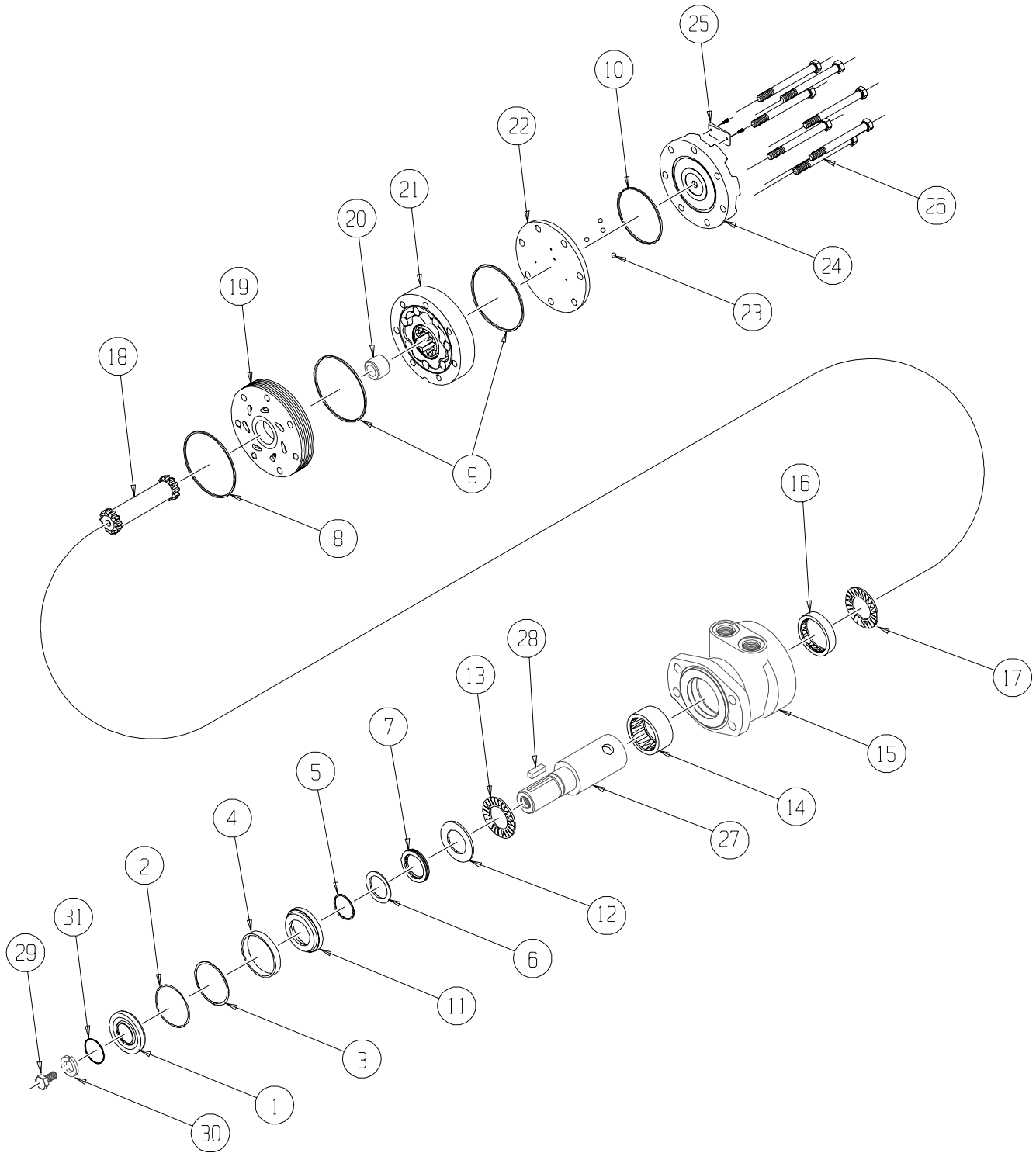


RE (500) Series



RE (500) SERIES MOTOR COMPONENTS

SEAL KIT 500444112B

DESCRIPTION	EXP VIEW ITEM #	KIT #
DUST SEAL	1	ITEMS # 1-10, #14, #16 & EXCLUDER SEAL INCLUDED IN SEAL KIT 500444112B
WIRE RING	2	
METAL BACKUP SHIM	3	
HIGH PRESSURE SEAL	4	
METAL BACKUP SHIM	5	
POLYAMIDE SEAL (2)	6	
SHAFT SEAL (2)	7	
REAR HOUSING SEAL	8	
BODY SEALS (2)	9	
ENDCOVER SEAL	10	
EXCLUDER SEAL	NOT SHOWN	
SEAL CARRIER	11	ITEMS #11-12 INCLUDED IN SEAL KIT 500444003
THRUST WASHER	12	

MISCELLANEOUS KITS

DESCRIPTION	EXPLODED VIEW ITEM #	KIT
REAR THRUST BEARING	17	500018059
FRONT HOUSING BEARING (1" WIDE)	14	500018003
REAR HOUSING BEARING (.5" WIDE)	16	500018002
FORWARD MANIFOLD (CCW OR "0")	19	500015006
REVERSE MANIFOLD (CW OR "1")	19	500015007
BALANCE PLATE (3 BALLS INCLD)	22	500012001
STEEL BALL	23	500018048
ENDCOVER	24	500016001
FRONT THRUST BEARING	13	500018252
DUST SEAL	1	500018006
1000 PSI RELIEF VALVE	NOT SHOWN	500018228
2000 PSI RELIEF VALVE	NOT SHOWN	500018231
3000 PSI RELIEF VALVE	NOT SHOWN	500018221
1.00-20 UNEF SLOTTED NUT	NOT SHOWN	500449304
1.00-20 UNEF SOLID NUT	NOT SHOWN	500449303
1.00-20 UNEF LOCK NUT	NOT SHOWN	300339303P

ROTORS, DRIVE LINKS AND SPACERS, AND BOLTS

WHEN CHANGING MOTOR DISPLACEMENTS, A MATCHING ROTOR AND BOLT SET KIT MUST BE ORDERED. A NEW DRIVE LINK KIT MAY BE NECESSARY. DRIVE LINK SPACERS ARE INCLUDED IN DRIVE LINK KITS, BUT MAY ALSO BE ORDERED SEPERATELY BY USING THE DRIVE LINK SPACER KIT NUMBER.

EXPLODED VIEW ITEM #	21	21	18	20	26
DISPLACEMENT	STANDARD ROTOR KIT	FREETURN ROTOR KIT	DRIVE LINK KIT	DRIVE LINK SPACER KIT	BOLT SET KIT
120	500087005	500087008	500014009	---	500445006
160	500137005	500137011	500014009	---	500445006
200	500167004	500167011	500014009	500018075	500445012
230	500147002	500147004	500014009	500018185	500445014
260	500227000	500227004	500014039	---	500445014
300	500247005	500247011	500014007	---	500445018
350	500207000	500207004	500014008	500018076	500445026
375	500307005	500307011	500014008	---	500445024
470	500357003	500357005	500014008	500018076	500445026
540	500407005	500407011	500014008	500018077	500445032
750	500607005	500607011	500014008	500018078	500445045

HOUSING KITS

(EXPLODED VIEW ITEM #15)

STANDARD HOUSING KITS INCLUDE THE FRONT BEARING (#14) AND THE REAR BEARING (#16) INSTALLED IN THE HOUSING.

DESCRIPTION	HOUSING KIT	DESCRIPTION	HOUSING KIT
#F31- 4-HOLE W/O PILOT & RS 4-HOLE BOLT PTRN.	500130223	#A58- 6-HOLE SAE "A" STYLE WITH 1/2" BSP.F	500131923
#W38- WHEEL MOUNT WITH 1/2" BSP.F	500130523	#W38- WHEEL MOUNT W/ RELIEF PORT W/ 1/2" BSP.F	500133523
#A38- 4-HOLE SAE "A" STYLE WITH 1/2" BSP.F	500130623	#A38- 4-HOLE SAE "A" W/ RLF. PRT & 1/2" BSP.F	500133623
#W31- WHEEL MOUNT WITH 7/8" O-RING	500130723	#W31- WHEEL MOUNT W/ RLF. PORT & 7/8" O-RING	500133723
#A31- 4-HOLE SAE "A" STYLE WITH 7/8" O-RING	500130823	#A31- 4-HOLE SAE "A" W/ VAL. CAVITY & 7/8" O-RING	500133823
#A11- 2-HOLE SAE "A" STYLE WITH 7/8" O-RING	500131623	#A51- 6-HOLE SAE "A" W/ VAL. CAVITY & 7/8" O-RING	500134823
#A18- 2-HOLE SAE "A" STYLE WITH 1/2" BSP.F	500131723	#A58- 6-HOLE SAE "A" W/ VAL. CAVITY & 1/2" BSP.F	500134923
#A51- 6-HOLE SAE "A" STYLE WITH 7/8" O-RING	500131823		

SHAFTS AND RELATED COMPONENTS KITS

SHAFT KITS COME WITH RELATED SHAFT COMPONENTS (i.e. keys, nuts, etc.)

TO ORDER INDIVIDUAL SHAFT COMPONENTS (i.e. keys, nuts, bolts, washers or wire rings) USE THE KIT NUMBER FOR EACH INDIVIDUAL PART

EXPLODED VIEW ITEM #	27	28	NOT SHOWN	29	30	31
DESCRIPTION	SHAFT KIT	KEY KIT	NUT KIT	BOLT KIT	WASHER KIT	WIRE RING KIT
#02- 6-B SPLINE	500011600	---	---	---	---	---
#22- 1-1/4" TAPERED	500011300	500449101	---	---	---	---
#20- 1-1/4" STRAIGHT	500011200	500449102	---	500449301	500449302	500449201
#23- 14 TOOTH SPLINE	500011101	---	SEE MISC.	---	---	500449201
#10- 1" STRAIGHT	500011201	500449100	KITS LIST	---	---	---
#12- 25MM STRAIGHT	500011109	500449104	ABOVE	---	---	---
#24- 19 TOOTH SPLINE	500011102	---	---	---	---	500449201
#21- 32MM STRAIGHT	500011203	500449103	---	---	---	500449201
#19- 1" STRAIGHT EXTENDED	500011202	500449100	---	---	---	---
#01- 13 TOOTH SPLINE	500011114	---	---	---	---	---
#29- 12 TOOTH SPLINE (BK)	500011116	---	---	---	---	---
#26- 1-1/4" STR. NON-ANNEALED	500011214	---	---	---	---	---