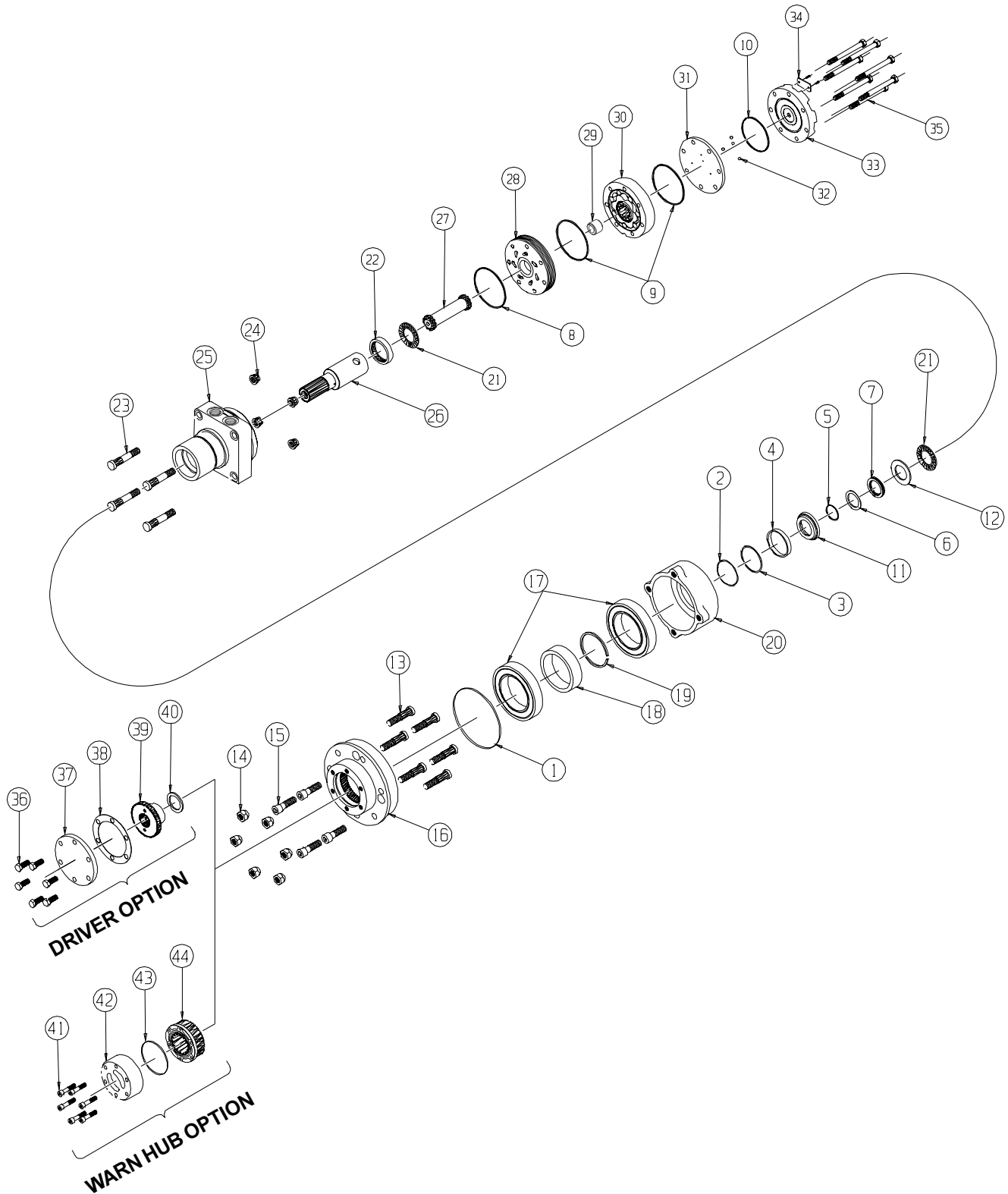


RE (540) Series



RE (540) SERIES MOTOR COMPONENTS

SEAL KIT 500444125

DESCRIPTION	EXP. VIEW ITEM #	KIT
FLANGE SEAL	1	ITEMS # 1-10,38 INCLUDED IN SEAL KIT 500444125
WIRE RING	2	
METAL BACKUP SHIM	3	
HIGH PRESSURE SEAL	4	
METAL BACKUP SHIM	5	
TEFLON BACKUP SEAL	6	
SHAFT SEAL	7	
REAR HOUSING SEAL	8	
BODY SEAL	9	
ENDCOVER SEAL	10	
PAPER GASKET	38	
SEAL CARRIER	11	ITEMS # 11-12 INCLUDED IN SEAL KIT 500444003
THRUST WASHER	12	

MISCELLANEOUS KITS

DESCRIPTION	EXP. VIEW ITEM #	KIT
STUD	13	500018081
LUG NUT	14	500018151
(4) CAPSCREWS	15	500018086
WHEEL FLANGE	16	500013035
125MM BEARING	17	500018095
BEARING SPACER	18	500018194
THRUST RING	19	500018062
BEARING HUB	20	500013055
THRUST BEARING	21	500018059
REAR HOUSING BEARING	22	500018002
PLANETARY MOUNT STUD	23	500018081
MOUNTING NUT	24	500018112
FORWARD MANIFOLD (CCW OR "0")	28	500015006
REVERSE MANIFOLD (CW OR "1")	28	500015007
BALANCE PLATE (3 BALLS INCLD.)	31 & 32	500012001
STEEL BALL (3)	32	500018048
ENDCOVER	33	500016001
(6) DRIVER COVER SCREWS	36	500018085
DRIVER COVER	37	700018001
DRIVER	39	500018179
SPACER	40	500018114
LOCKING HUB ASSEMBLY	41-44	500018099

ROTORS, DRIVE LINKS AND SPACERS, AND BOLTS

WHEN CHANGING MOTOR DISPLACEMENTS, A MATCHING ROTOR AND BOLT SET KIT MUST BE ORDERED. A NEW DRIVE LINK KIT MAY BE NECESSARY. DRIVE LINK SPACERS ARE INCLUDED IN DRIVE LINK KITS, BUT MAY ALSO BE ORDERED SEPERATELY BY USING THE DRIVE LINK SPACER KIT NUMBER.

EXPLODED VIEW ITEM #	30	30	27	29	35
DISPLACEMENT	STANDARD ROTOR KIT	FREETURN ROTOR KIT	DRIVE LINK KIT	DRIVE LINK SPACER KIT	BOLT SET KIT
120	500087005	500087008	500014009	---	500445006
160	500137005	500137011	500014009	---	500445006
200	500167004	500167011	500014009	500018075	500445012
230	500147002	500147004	500014009	500018185	500445014
260	500227000	500227004	500014009	500018076	500445014
300	500247005	500247011	500014007	---	500445018
350	500207000	500207004	500014008	500018076	500445026
375	500307005	500307011	500014008	---	500445024
470	500357003	500357005	500014008	500018076	500445026
540	500407005	500407011	500014008	500018077	500445032
750	500607005	500607011	500014008	500018078	500445045

HOUSING KITS

(EXPLODED VIEW ITEM #25)

STANDARD HOUSING KITS INCLUDE REAR BEARING (#22) INSTALLED IN THE HOUSING.

DESCRIPTION	HOUSING KIT
#W31- SETBACK WITH 7/8" O-RING	500131023

INTERNAL SHAFT

EXPLODED VIEW ITEM #	26
DESCRIPTION	SHAFT KIT
#24- 19 TOOTH SPLINE	500011102

White Drive Products, Inc. Phone (270) 885-1110 Fax (270) 886-8462

Rev. 1.04