

CENTRAL HYDRAULICS INC.

•Daytona Beach •Cocoa •Leesburg •Ocala •Tampa 1-800-264-9571

4-Way Directional Control Valve

Common "DC SERIES" Stock #'s

DC	75	T	3	L	B	S
DC	75	T	4	H	E	B
DC	16	O	4	L	B	D
DC	16	T	3	L	B	D
DC	16	T	3	L	B	S
DC	16	T	4	L	B	D
DC	16	T	4	L	B	S
	1	2	3	4	5	6

1 SERIES

DC – 4-way directional control valve

2 PORT SIZE

75 – 3/4" inlet/outlet and work ports

16 – #16 SAE inlet/outlet and work ports

3 SPOOL TYPE

T3 – Tandem center 3-way (DC only)
(Omit 4)

C – Closed center (DC only)

T – Tandem center (DC only)

O – Open center (DC only)

M – Fine metering

TM – Tandem metering

4 3-WAY or 4-WAY

3 – 3-way (Tandem spool and DC only)

4 – 4-way

5 ACTUATORS

L – Lever handle (B port is active when handle is pushed)

H – Rotary handle (Used in conjunction with rotary ball friction detent (E))

6 SPOOL ATTACHMENTS

S – Spring center

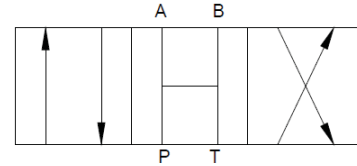
D – Three-position detent

F1 – Ball friction detent

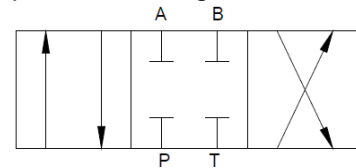
B – High lift ball spring relief for DC (TS-B)

E – Rotary ball friction detent

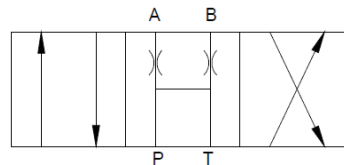
45 gpm
3000 psi
#16 SAE ORB
3/4" NPT



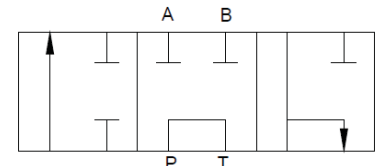
Open Center (O) - All of the ports are connected to tank when the spool is in neutral. Allows cylinder to move or motor to rotate when spool is in neutral. This spool is not designed for DCF valve.



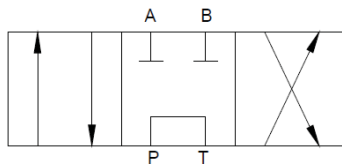
Closed Center (C) - All ports are blocked in neutral. Blocks cylinder or motor in neutral. Required for use with pressure compensated pump. This is not available for DCF valve.



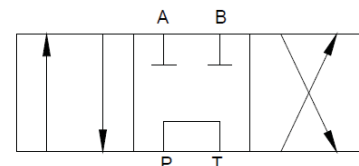
Fine Metering Spool (M) - The pressure drop in neutral is higher than the (TM) spool. Requires external locking valves to hold cylinder, because ports A and B are open (orificed) in the neutral position. Extremely fine metering control. This spool is designed for the DCF valve and acts as closed center in DC valve.



Tandem Three Way (T3) - Powers the cylinder in one direction. Pump unloads to tank when spool is in neutral, or when spool is being reversed. Cylinder is blocked when spool is in neutral. Port "B" is plugged. This spool is designed for the DC valve.



Tandem Metering Spool (TM) - Similar to (T) spool except much finer metering control. The pressure drop in neutral is lower than the (M) spool. Cylinder or motor blocked in neutral and pump unloads to tank. This spool is designed for DCF valve.



Tandem Center (T) - Powers cylinder or motor in both directions (metering capability is very limited). Pump unloads to tank when spool is in neutral. Cylinder or motor blocked when spool is in neutral. This spool is not designed for DCF valve.