



whitedriveproducts



**SERIES**

800 -

801 -



**HEAVY DUTY**  
Hydraulic Motor

**D9**

**OVERVIEW**

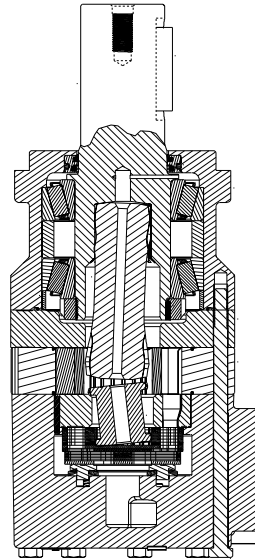
The D9 Series of motor is the largest member of the White Drive Product's family. The product is capable of producing torque values comparable to competitive motors, but with an industry leading breadth of displacements and shaft and porting options. In addition, the product incorporates dual tapered roller bearings, which improve load carrying capabilities. The motor is designed for use with a case-drain, which reduces pressure on the shaft seal and maintains lubrication to internal drive components, maximizing motor life. The series is available with industry standard mounting flanges found throughout the global market place.

**FEATURES / BENEFITS**

- Industry Standard Mounting Flanges that satisfy the global market place.
- Dual Tapered Roller Bearings improve load carrying capability.
- Nine Displacement Options provide industry leading design flexibility.
- Roller Stator® Design incorporates 8 lobe rotor and 9 pocket stator technology.

**SERIES DESCRIPTIONS**

800 - Hydraulic Motor  
Standard



**TYPICAL APPLICATIONS**

Construction equipment, agricultural equipment, mining equipment, forestry equipment, associated attachments and more

**SPECIFICATIONS**

CODE	Displacement cm <sup>3</sup> [in <sup>3</sup> /rev]	Max. Speed rpm		Max. Flow lpm [gpm]		Max. Torque Nm [lb-in]		Max. Pressure bar [psi]		
		cont.	inter.	cont.	inter.	cont.	inter.	cont.	inter.	peak
260	256 [15.6]	520	700	136 [36]	182 [48]	763 [6750]	891 [7885]	207 [3000]	241 [3500]	259 [3750]
300	294 [17.9]	530	688	159 [42]	204 [54]	870 [7700]	1017 [9000]	207 [3000]	241 [3500]	259 [3750]
375	367 [22.4]	550	613	204 [54]	227 [60]	1099 [9725]	1284 [11365]	207 [3000]	241 [3500]	259 [3750]
450	455 [27.8]	445	496	204 [54]	227 [60]	1349 [11934]	1571 [13907]	207 [3000]	241 [3500]	259 [3750]
525	525 [32.1]	385	430	204 [54]	227 [60]	1569 [13888]	1824 [16143]	207 [3000]	241 [3500]	259 [3750]
625	623 [38.1]	325	361	204 [54]	227 [60]	1883 [16660]	2183 [19317]	207 [3000]	241 [3500]	259 [3750]
735	734 [44.8]	276	308	204 [54]	227 [60]	1815 [16063]	2165 [19156]	172 [2500]	207 [3000]	241 [3500]
910	911 [55.6]	223	250	204 [54]	227 [60]	2290 [20265]	2713 [24008]	172 [2500]	207 [3000]	241 [3500]
1K0	1027 [62.7]	197	220	204 [54]	227 [60]	2055 [18186]	2535 [22434]	138 [2000]	172 [2500]	207 [3000]

► Performance data is typical. Performance of production units varies slightly from one motor to another. Running at intermittent ratings should not exceed 10% of every minute of operation.



**DISPLACEMENT PERFORMANCE**

		Pressure - bar [psi]						Max. Cont.	Max. Inter.			
		17 [250]	35 [500]	69 [1000]	104 [1500]	138 [2000]	173 [2500]	207 [3000]	241 [3500]			
		256 cm <sup>3</sup> [15.6 in <sup>3</sup> ] / rev						Intermittent Ratings - 10% of Operation				
		Torque - Nm [lb-in], Speed rpm										
Flow - lpm [gpm]	8 [2]	39 [341] 27	97 [858] 26	213 [1883] 24	328 [2900] 21	441 [3903] 19	552 [4886] 15	661 [5848] 12			Theoretical rpm	
	23 [6]	108 [958] 84	233 [2058] 81	358 [3169] 78	482 [4263] 74	601 [5322] 70	718 [6351] 66	830 [7349] 62				
Max. Cont.	45 [12]	112 [992] 171	241 [2134] 168	372 [3289] 164	502 [4439] 159	630 [5572] 153	755 [6679] 146	877 [7761] 139				
	68 [18]	110 [976] 258	241 [2132] 255	373 [3297] 250	506 [4477] 245	635 [5617] 237	764 [6760] 230	891 [7885] 222				
Max. Inter.	91 [24]	105 [929] 346	236 [2091] 342	370 [3270] 338	502 [4441] 331	631 [5587] 324	761 [6738] 315	890 [7878] 306				
	114 [30]	97 [855] 434	229 [2024] 430	359 [3178] 425	494 [4374] 419	627 [5544] 412	757 [6700] 402	883 [7818] 388				
	136 [36]	87 [768] 522	218 [1933] 518	352 [3115] 512	483 [4271] 505	617 [5463] 497	750 [6633] 488	878 [7766] 477				
	159 [42]	76 [669] 611	206 [1827] 607	340 [3009] 601	474 [4194] 594	608 [5376] 585	738 [6535] 576					
	182 [48]	62 [546] 701	193 [1712] 696	327 [2891] 690	460 [4070] 683	594 [5257] 674	726 [6426] 664					
		Overall Efficiency - 70 - 100% <input type="checkbox"/> 40 - 69% <input type="checkbox"/> 0 - 39% <input type="checkbox"/>										
		Rotor Width										
		Theoretical Torque - Nm [lb-in]										
		70 [622]	140 [1243]	281 [2486]	421 [3729]	562 [4972]	702 [6215]	843 [7458]	983 [8701]			
		mm [in]										
Displacement tested at 54°C [129°F] with an oil viscosity of 46cSt [213 SUS]												

		Pressure - bar [psi]						Max. Cont.	Max. Inter.			
		17 [250]	35 [500]	69 [1000]	104 [1500]	138 [2000]	173 [2500]	207 [3000]	241 [3500]			
		294 cm <sup>3</sup> [17.9 in <sup>3</sup> ] / rev						Intermittent Ratings - 10% of Operation				
		Torque - Nm [lb-in], Speed rpm										
Flow - lpm [gpm]	8 [2]	52 [458] 23	119 [1053] 21	252 [2234] 19	382 [3379] 16	511 [4521] 12	636 [5633] 9			Theoretical rpm		
	23 [6]	127 [1124] 72	268 [2376] 68	410 [3625] 65	549 [4854] 60	686 [6069] 55	819 [7250] 50	949 [8398] 45				
Max. Cont.	45 [12]	130 [1152] 147	275 [2434] 143	422 [3731] 138	568 [5025] 132	713 [6313] 125	856 [7578] 119	996 [8815] 113				
	68 [18]	129 [1141] 222	277 [2452] 218	427 [3777] 213	575 [5092] 206	722 [6392] 199	869 [7690] 191	1013 [8961] 183				
Max. Inter.	91 [24]	124 [1097] 298	274 [2422] 294	424 [3753] 288	573 [5074] 281	722 [6390] 272	871 [7707] 264	1019 [9014] 255				
	114 [30]	115 [1022] 375	266 [2356] 371	418 [3700] 364	569 [5032] 357	719 [6362] 348	867 [7673] 339	1016 [8987] 330				
	136 [36]	104 [924] 453	255 [2256] 448	407 [3601] 442	559 [4947] 434	710 [6279] 426	860 [7615] 416	1009 [8925] 405				
	159 [42]	92 [814] 530	242 [2144] 525	395 [3498] 517	547 [4845] 509	699 [6183] 500	848 [7506] 490	999 [8837] 480				
	182 [48]	78 [686] 608	227 [2011] 602	379 [3357] 595	533 [4715] 586	685 [6062] 577	838 [7414] 566					
	204 [54]	61 [543] 688	212 [1872] 682	364 [3219] 674	518 [4582] 665	670 [5932] 655	822 [7272] 644					
		Overall Efficiency - 70 - 100% <input type="checkbox"/> 40 - 69% <input type="checkbox"/> 0 - 39% <input type="checkbox"/>										
		Rotor Width										
		Theoretical Torque - Nm [lb-in]										
		81 [714]	161 [1428]	323 [2855]	484 [4283]	645 [5710]	807 [7138]	968 [8566]	1129 [9993]			
		mm [in]										
Displacement tested at 54°C [129°F] with an oil viscosity of 46cSt [213 SUS]												

► Performance data is typical. Performance of production units varies slightly from one motor to another.

**DISPLACEMENT PERFORMANCE**

<b>375</b>		Pressure - bar [psi]						Max. Cont.	Max. Inter.	
		17 [250]	35 [500]	69 [1000]	104 [1500]	138 [2000]	173 [2500]	207 [3000]	241 [3500]	
367 cm <sup>3</sup> [22.4 in <sup>3</sup> ] / rev										
Flow - lpm [gpm]		Torque - Nm [lb-in], Speed rpm						Intermittent Ratings - 10% of Operation		
		8 [2]	62 [546] 18	147 [1297] 17	311 [2752] 14	474 [4197] 11	634 [5609] 8	792 [7010] 5		21
Max. Max. Inter. Cont.	23 [6]		162 [1431] 57	340 [3011] 54	518 [4585] 50	691 [6118] 46	860 [7612] 42	1024 [9065] 38	1186 [10495] 34	62
	45 [12]		167 [1474] 117	350 [3100] 114	534 [4729] 109	719 [6365] 103	900 [7963] 98	1075 [9510] 92	1246 [11026] 86	124
	68 [18]		164 [1454] 177	351 [3107] 173	538 [4761] 168	727 [6432] 162	914 [8084] 155	1097 [9706] 147	1278 [11312] 140	186
	91 [24]		158 [1400] 238	347 [3075] 234	536 [4740] 229	725 [6413] 222	913 [8080] 214	1099 [9726] 205	1284 [11365] 196	248
	114 [30]		148 [1308] 300	338 [2992] 295	528 [4672] 290	717 [6348] 282	906 [8018] 274	1093 [9672] 264	1280 [11331] 254	310
	136 [36]		135 [1191] 362	327 [2891] 358	518 [4583] 353	708 [6264] 345	898 [7948] 336	1088 [9628] 326	1277 [11298] 315	371
	159 [42]		120 [1065] 424	312 [2758] 420	504 [4463] 414	693 [6134] 406	883 [7815] 396	1074 [9500] 385	1263 [11174] 373	433
	182 [48]		103 [912] 486	294 [2601] 481	487 [4308] 475	674 [5968] 468	866 [7661] 458	1057 [9354] 444	1245 [11017] 432	495
	204 [54]		84 [747] 549	274 [2429] 544	466 [4127] 538	656 [5808] 530	844 [7471] 521	1039 [9194] 510	1232 [10906] 490	557
	227 [60]		64 [567] 613	253 [2241] 607	445 [3940] 600	634 [5608] 592	827 [7317] 582	1017 [8998] 572		619
Rotor Width		Overall Efficiency - 70 - 100% <input type="checkbox"/> 40 - 69% <input type="checkbox"/> 0 - 39% <input type="checkbox"/>								
31.8 [1.252] mm [in]		Theoretical Torque - Nm [lb-in]								
		101 [892]	202 [1784]	403 [3568]	605 [5352]	806 [7137]	1008 [8921]	1210 [10705]	1411 [12489]	
Displacement tested at 54°C [129°F] with an oil viscosity of 46cSt [213 SUS]										

<b>450</b>		Pressure - bar [psi]						Max. Cont.	Max. Inter.	
		17 [250]	35 [500]	69 [1000]	104 [1500]	138 [2000]	173 [2500]	207 [3000]	241 [3500]	
455 cm <sup>3</sup> [27.8 in <sup>3</sup> ] / rev										
Flow - lpm [gpm]		Torque - Nm [lb-in], Speed rpm						Intermittent Ratings - 10% of Operation		
		8 [2]	82 [722] 15	189 [1674] 14	400 [3538] 12	608 [5384] 11	816 [7224] 9			17
Max. Max. Inter. Cont.	23 [6]	88 [780] 47	201 [1782] 46	425 [3764] 44	646 [5718] 40	863 [7639] 37	1070 [9473] 34	1276 [11292] 31		50
	45 [12]	91 [803] 96	205 [1813] 95	434 [3841] 92	663 [5871] 87	891 [7883] 82	1113 [9849] 77	1327 [11747] 72	1537 [13605] 69	100
	68 [18]	86 [757] 145	200 [1770] 144	430 [3807] 141	662 [5861] 136	894 [7916] 130	1124 [9950] 123	1349 [11934] 117	1565 [13853] 111	150
	91 [24]	77 [678] 194	191 [1692] 193	423 [3747] 190	656 [5807] 185	888 [7859] 179	1120 [9910] 171	1347 [11923] 163	1569 [13884] 154	200
	114 [30]	64 [567] 244	179 [1583] 243	413 [3652] 239	646 [5718] 234	879 [7779] 227	1113 [9854] 220	1344 [11896] 211	1571 [13907] 202	250
	136 [36]		162 [1434] 293	397 [3516] 289	631 [5583] 284	865 [7654] 277	1098 [9713] 269	1329 [11764] 259	1559 [13799] 249	300
	159 [42]		143 [1266] 343	378 [3347] 340	613 [5425] 334	847 [7498] 327	1080 [9558] 318	1313 [11620] 309	1543 [13657] 298	349
	182 [48]		122 [1081] 393	357 [3155] 390	592 [5238] 384	826 [7306] 377	1058 [9363] 368	1291 [11427] 357	1522 [13471] 345	399
	204 [54]		97 [859] 445	333 [2947] 440	568 [5029] 434	803 [7180] 426	1034 [9148] 417	1266 [11206] 406	1498 [13255] 393	449
	227 [60]		73 [642] 496	305 [2698] 491	540 [4781] 484	775 [6862] 477	1006 [8899] 467	1242 [10994] 458		499
Rotor Width		Overall Efficiency - 70 - 100% <input type="checkbox"/> 40 - 69% <input type="checkbox"/> 0 - 39% <input type="checkbox"/>								
39.4 [4.553] mm [in]		Theoretical Torque - Nm [lb-in]								
		125 [1106]	250 [2212]	500 [4425]	750 [6637]	1000 [8849]	1250 [11061]	1500 [13274]	1750 [15486]	
Displacement tested at 54°C [129°F] with an oil viscosity of 46cSt [213 SUS]										

► Performance data is typical. Performance of production units varies slightly from one motor to another.



DISPLACEMENT PERFORMANCE

<b>525</b>		Pressure - bar [psi]						Max. Cont.	Max. Inter.	
		17 [250]	35 [500]	69 [1000]	104 [1500]	138 [2000]	173 [2500]	207 [3000]	241 [3500]	
525 cm <sup>3</sup> [32.1 in <sup>3</sup> ] / rev										
Flow - lpm [gpm]		Torque - Nm [lb-in], Speed rpm						Intermittent Ratings - 10% of Operation		
		8 [2]	13	12	10	8	6			15
Max. Max. Inter. Cont.	23 [6]	112 [995]	243 [2148]	504 [4460]	755 [6683]	1004 [8886]	1240 [10976]	1479 [13087]		44
	45 [12]	112 [989]	245 [2165]	512 [4529]	778 [6887]	1041 [9212]	1296 [11468]	1543 [13653]		87
	68 [18]	105 [927]	238 [2107]	508 [4497]	779 [6890]	1045 [9251]	1306 [11560]	1560 [13804]	1793 [15869]	130
	91 [24]	93 [824]	226 [2002]	496 [4394]	767 [6789]	1038 [9189]	1306 [11558]	1569 [13888]	1824 [16143]	173
	114 [30]	79 [696]	212 [1874]	484 [4283]	755 [6683]	1026 [9079]	1295 [11457]	1560 [13809]	1819 [16097]	217
	136 [36]		193 [1710]	465 [4144]	736 [6513]	1007 [8912]	1279 [11318]	1549 [13706]	1811 [16023]	260
	159 [42]		170 [1504]	444 [3925]	715 [6330]	986 [8726]	1257 [11125]	1526 [13507]	1793 [15864]	303
	182 [48]		147 [1305]	420 [3716]	692 [6120]	961 [8509]	1233 [10914]	1505 [13321]	1772 [15682]	346
	204 [54]		118 [1041]	390 [3450]	661 [5850]	934 [8269]	1205 [10660]	1475 [13050]	1741 [15411]	389
	227 [60]		88 [778]	359 [3181]	631 [5582]	902 [7980]	1174 [10386]	1443 [12768]	338	433
			253	249	243	236	228	219	210	
			296	292	287	280	272	262	252	
		339	335	328	321	314	303	294		
		384	379	374	366	358	348	338		
		429	423	417	409	400	391			
<b>Rotor Width</b>										
45.5 [1.791]		Overall Efficiency - 70 - 100% <input type="checkbox"/> 40 - 69% <input type="checkbox"/> 0 - 39% <input type="checkbox"/>								
mm [in]		Theoretical Torque - Nm [lb-in]								
		114 [1276]	288 [2553]	577 [5106]	865 [7659]	1154 [10211]	1442 [12764]	1731 [15317]	2019 [17870]	
Displacement tested at 54°C [129°F] with an oil viscosity of 46cSt [213 SUS]										

<b>625</b>		Pressure - bar [psi]						Max. Cont.	Max. Inter.	
		17 [250]	35 [500]	69 [1000]	104 [1500]	138 [2000]	173 [2500]	207 [3000]	241 [3500]	
623 cm <sup>3</sup> [38.1 in <sup>3</sup> ] / rev										
Flow - lpm [gpm]		Torque - Nm [lb-in], Speed rpm						Intermittent Ratings - 10% of Operation		
		8 [2]	10	10	8	7	6			13
Max. Max. Inter. Cont.	23 [6]	144 [1273]	300 [2656]	609 [5393]	916 [8102]	1204 [10655]	1479 [13090]			37
	45 [12]	141 [1247]	303 [2682]	624 [5521]	945 [8362]	1249 [11049]	1559 [13797]	1846 [16339]		73
	68 [18]	133 [1179]	295 [2613]	619 [5478]	942 [8340]	1263 [11180]	1576 [13949]	1877 [16607]	2166 [19168]	110
	91 [24]	120 [1061]	281 [2486]	607 [5368]	932 [8251]	1255 [11102]	1572 [13913]	1882 [16659]	2183 [19317]	146
	114 [30]	100 [886]	261 [2309]	586 [5183]	910 [8053]	1234 [10916]	1552 [13738]	1860 [16456]	2172 [19220]	183
	136 [36]	78 [694]	238 [2106]	562 [4971]	888 [7859]	1213 [10731]	1533 [13571]	1839 [16274]	2189 [19369]	219
	159 [42]	53 [469]	210 [1855]	532 [4711]	857 [7585]	1183 [10471]	1506 [13325]	1827 [16171]	2143 [18968]	255
	182 [48]		180 [1591]	503 [4453]	827 [7315]	1151 [10189]	1475 [13050]	1795 [15888]	2114 [18706]	292
	204 [54]		146 [1295]	470 [4155]	793 [7021]	1118 [9898]	1440 [12742]	1758 [15558]	2078 [18392]	328
	227 [60]		111 [982]	433 [3829]	756 [6693]	1080 [9555]	1401 [12401]	1722 [15238]	291	365
			34	32	31	28	21			
			69	67	66	56	58	53		
		106	105	104	98	93	86	79		
		142	141	140	137	133	128	121	113	
		178	177	175	172	167	161	155	148	
		214	213	211	208	203	197	190	181	
		251	250	248	245	240	234	227	219	
		287	285	281	277	270	262	254		
		324	322	318	313	306	299	291		
		361	359	355	349	343	335			
<b>Rotor Width</b>										
54.0 [2.127]		Overall Efficiency - 70 - 100% <input type="checkbox"/> 40 - 69% <input type="checkbox"/> 0 - 39% <input type="checkbox"/>								
mm [in]		Theoretical Torque - Nm [lb-in]								
		171 [1514]	342 [3029]	684 [6057]	1027 [9086]	1369 [12115]	1711 [15144]	2053 [18172]	2396 [21201]	
Displacement tested at 54°C [129°F] with an oil viscosity of 46cSt [213 SUS]										

► Performance data is typical. Performance of production units varies slightly from one motor to another.

**DISPLACEMENT PERFORMANCE**

		Pressure - bar [psi]					Max. Cont.	Max. Inter.					
		17 [250]	35 [500]	69 [1000]	104 [1500]	138 [2000]	173 [2500]	207 [3000]					
		734 cm <sup>3</sup> [44.8 in <sup>3</sup> ] / rev							Intermittent Ratings - 10% of Operation				
		Torque - Nm [lb-in], Speed rpm											
Flow - lpm [gpm]	8 [2]	158 [1395] 9	328 [2900] 9	667 [5904] 8	1006 [8902] 7	1344 [11890] 6				11	Theoretical rpm		
	23 [6]	165 [1460] 29	347 [3074] 29	710 [6282] 27	1061 [9389] 26	1401 [12397] 20	1739 [15391] 13			31			
	45 [12]	163 [1445] 60	350 [3095] 59	722 [6387] 57	1089 [9635] 54	1440 [12747] 51	1775 [15711] 37			62			
	68 [18]	155 [1374] 90	343 [3036] 89	721 [6377] 87	1093 [9675] 84	1458 [12900] 79	1813 [16045] 75	2162 [19136] 71		93			
	91 [24]	141 [1245] 120	329 [2914] 119	708 [6267] 117	1085 [9606] 113	1455 [12872] 108	1815 [16063] 103	2165 [19156] 98		124			
	114 [30]	119 [1050] 151	307 [2714] 150	685 [6065] 147	1063 [9409] 143	1435 [12699] 137	1799 [15917] 131	2153 [19051] 124		155			
	136 [36]	93 [823] 182	282 [2491] 181	660 [5841] 178	1039 [9191] 173	1413 [12504] 167	1779 [15740] 160	2135 [18897] 152		186			
	159 [42]		248 [2193] 213	629 [5562] 209	1010 [8934] 205	1388 [12280] 198	1760 [15574] 191	2122 [18778] 183		217			
	182 [48]		215 [1905] 244	595 [5263] 240	975 [8626] 235	1356 [11998] 228	1732 [15330] 221	2098 [18570] 213		248			
	204 [54]		176 [1558] 276	555 [4913] 272	936 [8286] 267	1319 [11671] 260	1694 [14992] 252	2065 [18274] 244		279			
	227 [60]		132 [1171] 308	511 [4521] 304	892 [7892] 298	1273 [11267] 291	1649 [14589] 283			310			
			Overall Efficiency - 70 - 100% <input type="checkbox"/> 40 - 69% <input type="checkbox"/> 0 - 39% <input type="checkbox"/>										
			Rotor Width										
		63.5 [2.501]											
		mm [in]											
		Theoretical Torque - Nm [lb-in]											
		201 [1783]	403 [3565]	806 [7130]	1209 [10695]	1611 [14260]	2014 [17825]	2417 [21390]					
		Displacement tested at 54°C [129°F] with an oil viscosity of 46cSt [213 SUS]											

		Pressure - bar [psi]					Max. Cont.	Max. Inter.					
		17 [250]	35 [500]	69 [1000]	104 [1500]	138 [2000]	173 [2500]	207 [3000]					
		911 cm <sup>3</sup> [55.6 in <sup>3</sup> ] / rev							Intermittent Ratings - 10% of Operation				
		Torque - Nm [lb-in], Speed rpm											
Flow - lpm [gpm]	8 [2]	210 [1860] 7	425 [3761] 7	842 [7455] 6	1245 [11022] 5					9	Theoretical rpm		
	23 [6]	221 [1955] 24	451 [3989] 23	905 [8005] 21	1334 [11807] 17	1737 [15368] 8				25			
	45 [12]	218 [1931] 48	456 [4036] 47	929 [8223] 45	1389 [12295] 42	1826 [16161] 36	2224 [19682] 13			50			
	68 [18]	205 [1812] 73	445 [3937] 72	924 [8174] 69	1395 [12346] 66	1855 [16415] 59	2277 [20148] 53	2693 [23835] 48		75			
	91 [24]	182 [1607] 97	421 [3728] 97	901 [7969] 94	1376 [12174] 89	1841 [16295] 83	2290 [20265] 74	2713 [24008] 66		100			
	114 [30]	145 [1282] 122	381 [3376] 122	858 [7591] 119	1330 [11766] 114	1795 [15881] 107	2248 [19895] 99	2680 [23720] 90		125			
	136 [36]	90 [797] 148	318 [2813] 146	784 [6938] 142	1244 [11010] 136	1701 [15056] 128	2146 [18995] 119	2572 [22758] 108		150			
	159 [42]	54 [478] 173	279 [2465] 171	740 [6553] 167	1202 [10633] 160	1658 [14668] 152	2105 [18629] 143	2538 [22461] 133		175			
	182 [48]		233 [2061] 197	691 [6115] 192	1150 [10173] 185	1607 [14220] 177	2060 [18230] 168	2500 [22119] 158		200			
	204 [54]		173 [1527] 223	629 [5569] 219	1088 [9628] 212	1546 [13682] 203	2001 [17705] 194	2447 [21656] 184		225			
	227 [60]		113 [998] 250	571 [5056] 244	1028 [9095] 236	1485 [13145] 228	1946 [17223] 219			250			
			Overall Efficiency - 70 - 100% <input type="checkbox"/> 40 - 69% <input type="checkbox"/> 0 - 39% <input type="checkbox"/>										
			Rotor Width										
		78.9 [3.106]											
		mm [in]											
		Theoretical Torque - Nm [lb-in]											
		250 [2213]	500 [4426]	1000 [8852]	1500 [13278]	2001 [17704]	2501 [22130]	3001 [26557]					
		Displacement tested at 54°C [129°F] with an oil viscosity of 46cSt [213 SUS]											

► Performance data is typical. Performance of production units varies slightly from one motor to another.



**DISPLACEMENT PERFORMANCE**

		Pressure - bar [psi]				Max. Cont.	Max. Inter.	
<b>1K0</b>		17 [250]	35 [500]	69 [1000]	104 [1500]	138 [2000]	173 [2500]	
1027 cm <sup>3</sup> [62.7 in <sup>3</sup> ] / rev								
		Torque - Nm [lb-in], Speed rpm				Intermittent Ratings - 10% of Operation		
Flow - lpm [gpm]	8 [2]	227 [2006] 7	467 [4134] 6	945 [8363] 6	1416 [12528] 6	1884 [16673] 5	8	
	23 [6]	239 [2118] 21	495 [4380] 21	1000 [8851] 20	1487 [13156] 16	1947 [17228] 9	23	
	45 [12]	238 [2102] 43	503 [4454] 42	1030 [9111] 41	1544 [13666] 39	2013 [17815] 19	45	
	68 [18]	225 [1988] 65	494 [4373] 64	1029 [9105] 63	1556 [13770] 60	2055 [18186] 55	2526 [22350] 50	67
	91 [24]	198 [1753] 86	467 [4135] 86	1007 [8911] 84	1539 [13615] 81	2048 [18127] 75	2531 [22399] 68	89
	114 [30]	167 [1479] 108	437 [3871] 108	978 [8651] 106	1512 [13384] 103	2037 [18025] 97	2535 [22434] 89	111
	136 [36]	129 [1139] 131	399 [3527] 130	940 [8319] 128	1477 [13069] 124	2004 [17733] 118	2513 [22235] 110	133
	159 [42]	87 [773] 153	353 [3124] 152	894 [7910] 150	1432 [12671] 146	1964 [17381] 140	2465 [21818] 129	155
	182 [48]		303 [2684] 175	844 [7472] 172	1383 [12241] 168	1917 [16964] 162	2435 [21550] 154	177
	204 [54]		246 [2180] 197	785 [6950] 195	1324 [11718] 190	1856 [16429] 184	2360 [20883] 177	199
	227 [60]		183 [1617] 220	723 [6400] 217	1260 [11150] 213	1793 [15872] 206	2319 [20522] 198	222
Max. Max. Inter. Cont.							Theoretical rpm	

**Overall Efficiency** - 70 - 100%  40 - 69%  0 - 39%

Rotor Width		Theoretical Torque - Nm [lb-in]					
88.9 [3.502]	mm [in]	282 [2495]	564 [4990]	1128 [9981]	1692 [14971]	2256 [19961]	2820 [24952]

Displacement tested at 54°C [129°F] with an oil viscosity of 46cSt [213 SUS]

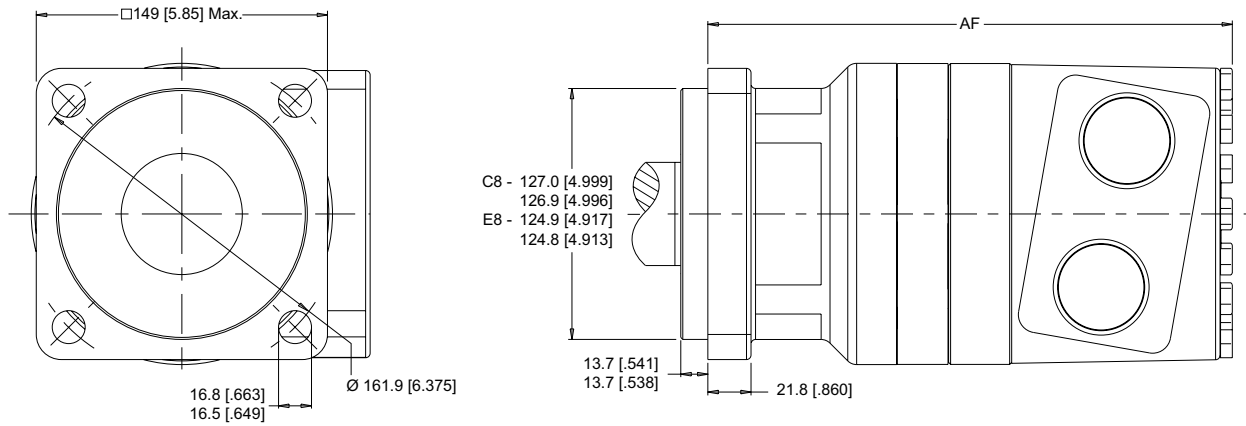
► Performance data is typical. Performance of production units varies slightly from one motor to another.

**HOUSINGS**

► Dimensions shown are without paint. Paint thickness can be up to 0.13 [0.005].

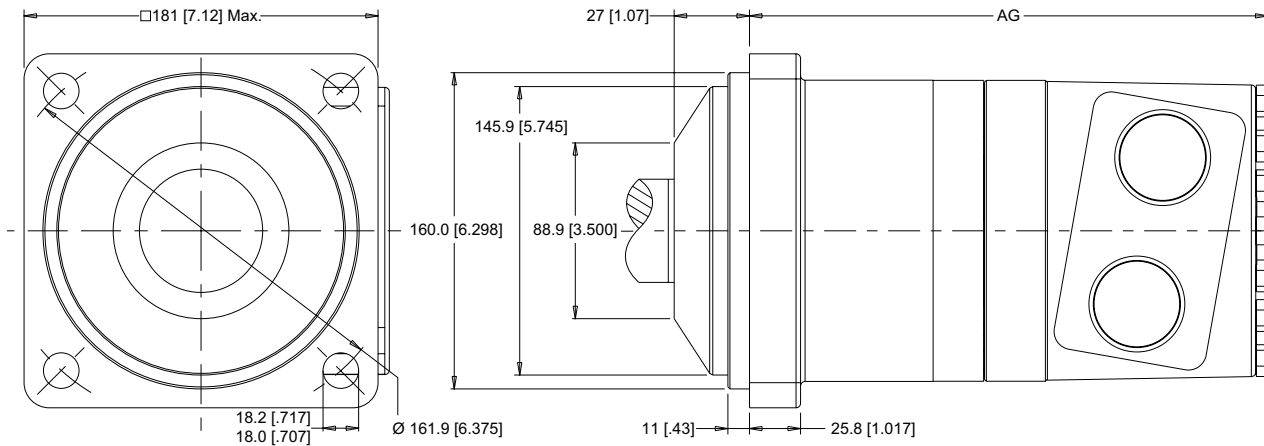
**4-HOLE, SAE C MOUNT**

**C8** Side Ports    **E8** Side Ports



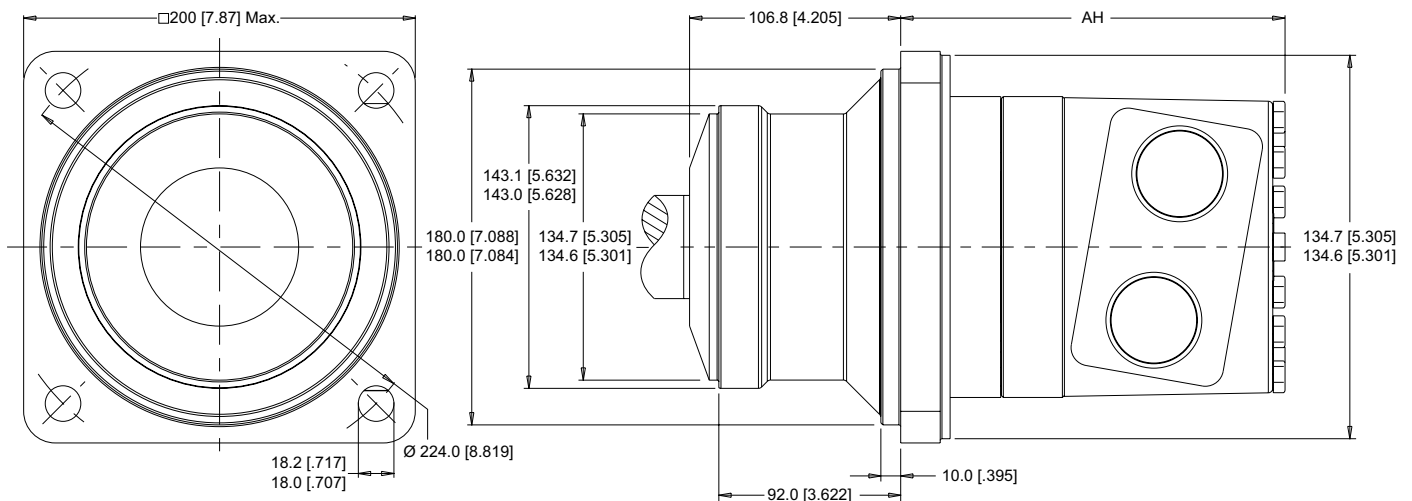
**4-HOLE, WHEEL MOUNT WITH 160mm PILOT**

**D8** Side Ports



**4-HOLE, WHEEL MOUNT**

**W8** Side Ports



► Dimensions AF, AG & AH are charted on page 9. Porting options listed on pages 10-11.



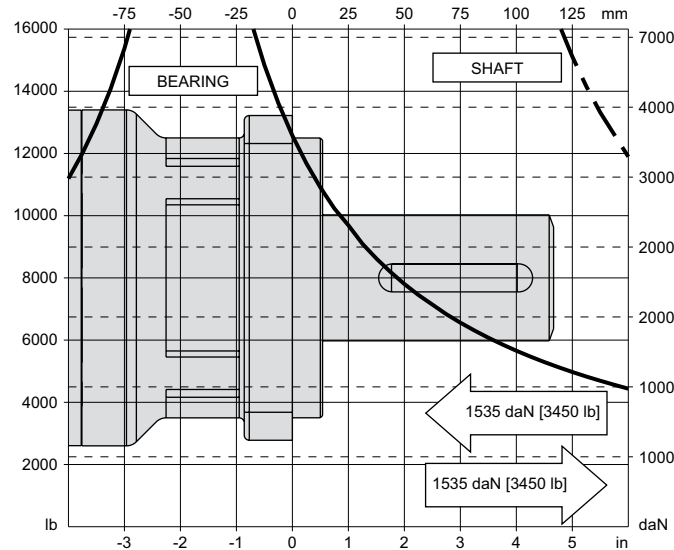


**TECHNICAL INFORMATION**

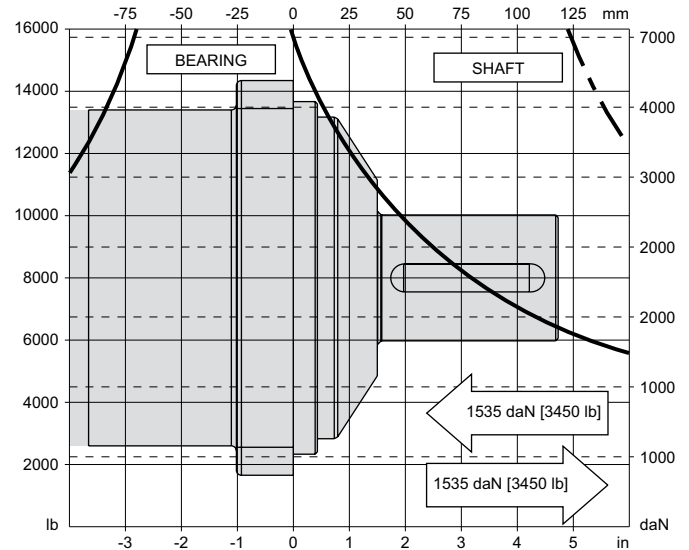
**ALLOWABLE SHAFT LOAD / BEARING CURVE**

The bearing curve represents allowable bearing loads based on ISO 281 bearing capacity for an  $L_{10}$  life of 2,000 hours at 100 rpm. Radial loads for speeds other than 100 rpm may be calculated using the multiplication factor table below.

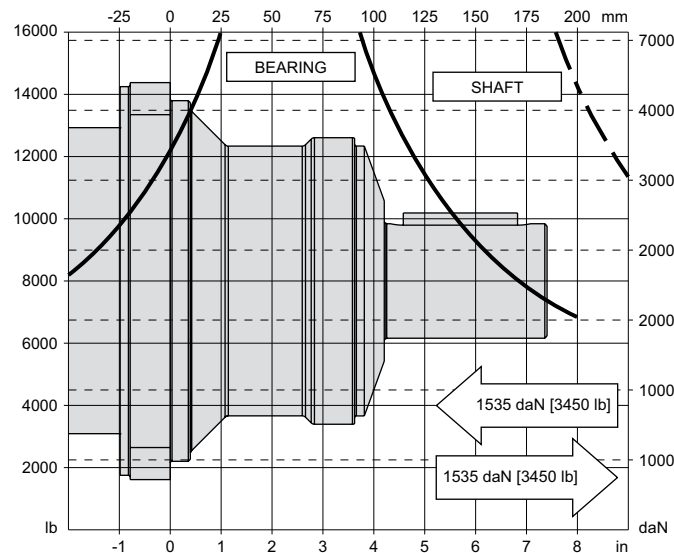
**SAE C MOUNTS**



**160mm PILOT WHEEL MOUNTS**



**WHEEL MOUNTS**



**LENGTH & WEIGHT CHARTS**

Dimensions AF, AG & AH are the overall motor lengths from the rear of the motor to the mounting surface and are referenced on detailed drawings listed on page 8.

AF	Length	Weight
#	mm [in]	kg [lb]
260	255 [10.03]	32.0 [70.5]
300	258 [10.16]	32.5 [71.4]
375	264 [10.41]	33.2 [73.1]
450	272 [10.71]	34.1 [75.1]
525	278 [10.95]	34.9 [76.8]
625	287 [11.29]	35.9 [78.9]
735	296 [11.66]	37.0 [81.4]
910	311 [12.26]	38.8 [85.4]
1K0	322 [12.67]	40.0 [88.0]

AH	Length	Weight
#	mm [in]	kg [lb]
260	184 [7.26]	37.7 [83.0]
300	188 [7.39]	38.1 [83.9]
375	194 [7.64]	38.9 [85.6]
450	202 [7.94]	39.8 [87.6]
525	208 [8.18]	40.6 [89.2]
625	216 [8.51]	41.6 [91.4]
735	226 [8.89]	42.7 [93.9]
910	241 [9.49]	44.5 [97.9]
1K0	251 [9.89]	45.7 [100.5]

AG	Length	Weight
#	mm [in]	kg [lb]
260	252 [9.93]	37.6 [82.8]
300	256 [10.06]	38.0 [83.7]
375	262 [10.31]	38.8 [85.4]
450	269 [10.61]	39.7 [87.4]
525	276 [10.85]	40.5 [89.0]
625	284 [11.19]	41.5 [91.2]
735	294 [11.56]	42.6 [93.7]
910	309 [12.16]	44.4 [97.7]
1K0	319 [12.57]	45.6 [100.3]

► All D9 series motor weights can vary  $\pm 2.3$  kg [5 lb] depending on model configurations such as housing, shaft, endcover, options etc.

BEARING LOAD MULTIPLICATION FACTOR TABLE			
RPM	FACTOR	RPM	FACTOR
50	1.23	500	0.62
100	1.00	600	0.58
200	0.81	700	0.56
300	0.72	800	0.50
400	0.66		

# D9 (800 Series)

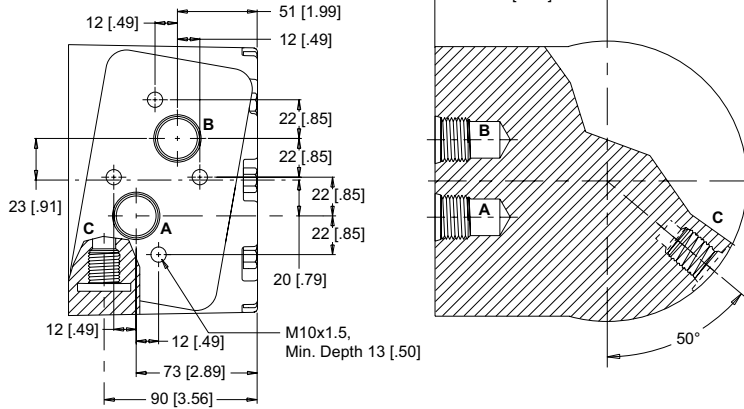
## Hydraulic Motor

### PORTING

► Dimensions shown are without paint. Paint thickness can be up to 0.13 [.005].

#### SIDE PORTED - OFFSET MANIFOLD

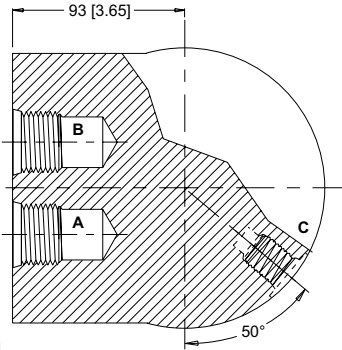
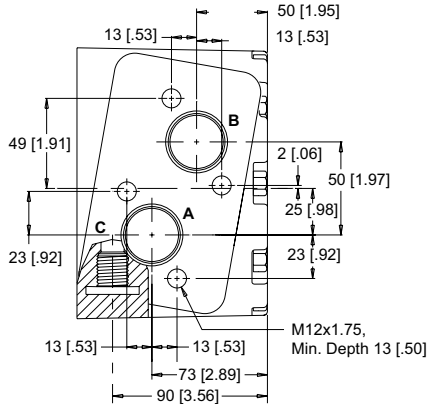
**7** Main Ports **A, B:** G 3/4  
Drain Port **C:** G 1/4



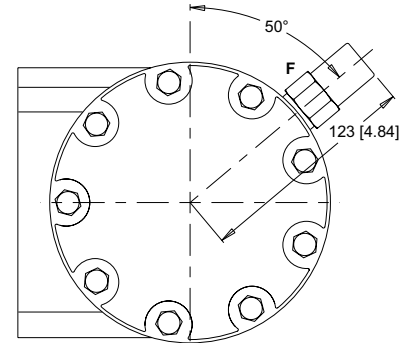
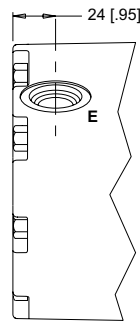
#### SIDE PORTED - OFFSET MANIFOLD

**8** Main Ports **A, B:** G 1  
Drain Port **C:** G 1/4

##### STANDARD



##### OPTIONAL

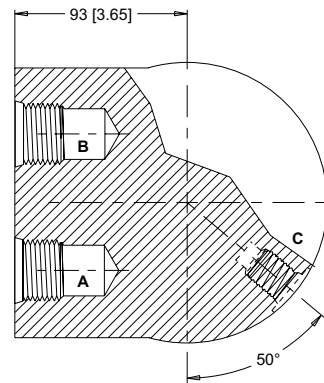
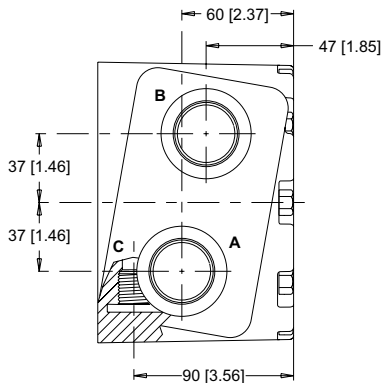


E: 10 Series/2-Way Valve Cavity 7/8-14 UNF F: Valve Cartridge Installed

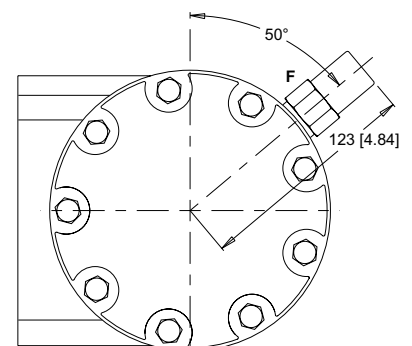
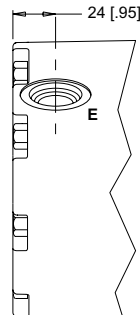
#### SIDE PORTED - OFFSET

**9** Main Ports **A, B:** 1 5/16-12 UNF  
Drain Port **C:** 3/4-16 UNF

##### STANDARD



##### OPTIONAL





**PORTING**

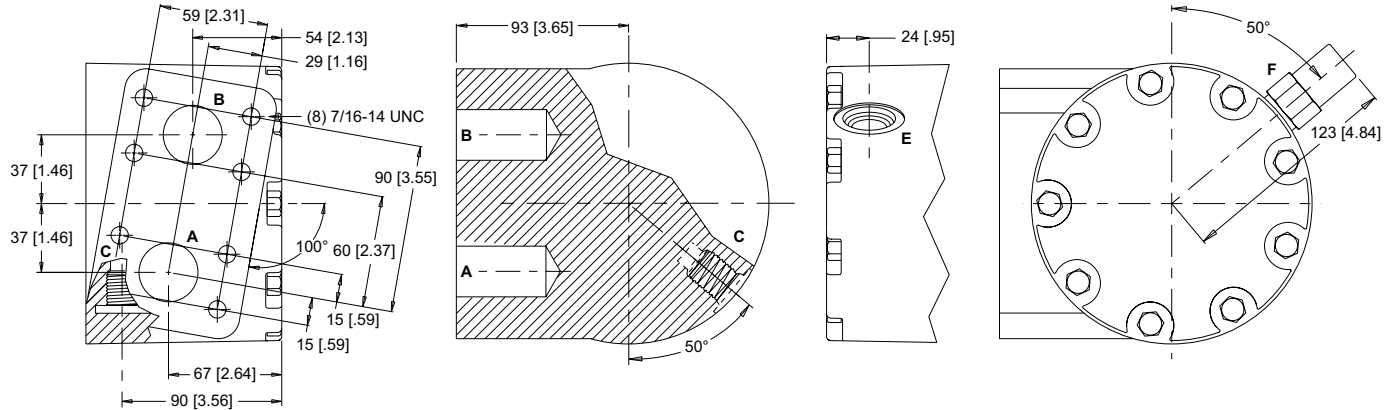
► Dimensions shown are without paint. Paint thickness can be up to 0.13 [.005].

**SIDE PORTED - SPLIT FLANGE**

**0** Main Ports **A, B:** 1-1/4" Drilled  
Drain Port **C:** 3/4-16 UNF

STANDARD

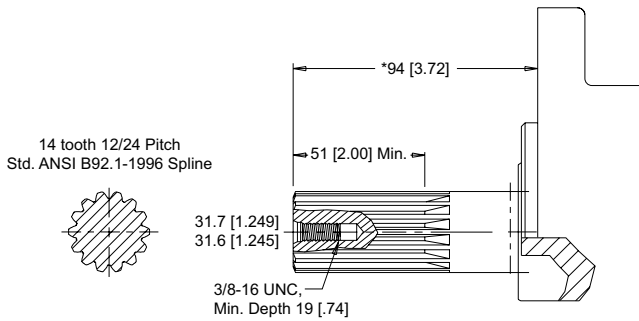
OPTIONAL



E: 10 Series/2-Way Valve Cavity 7/8-14 UNF F: Valve Cartridge Installed

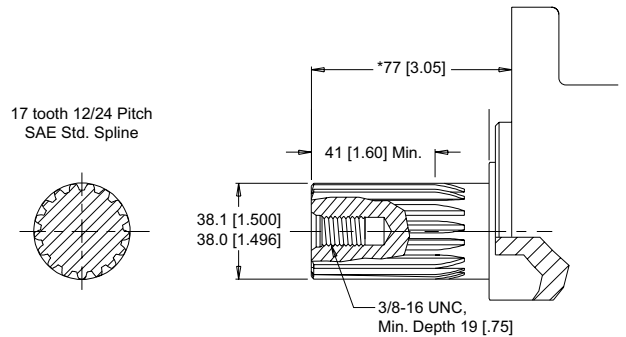
**SHAFTS**

**23** 14 Tooth Spline



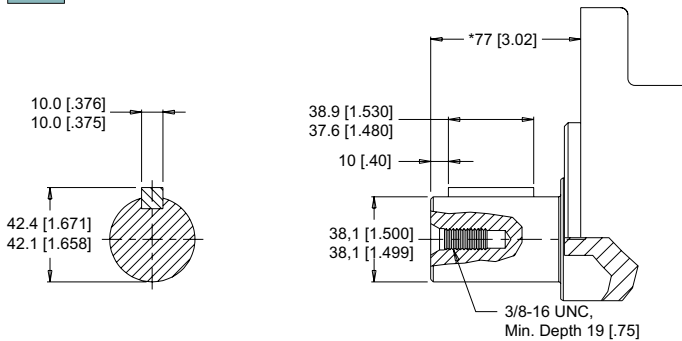
Max. Torque: 2070 Nm [18400 lb-in]

**33** 17 Tooth Spline



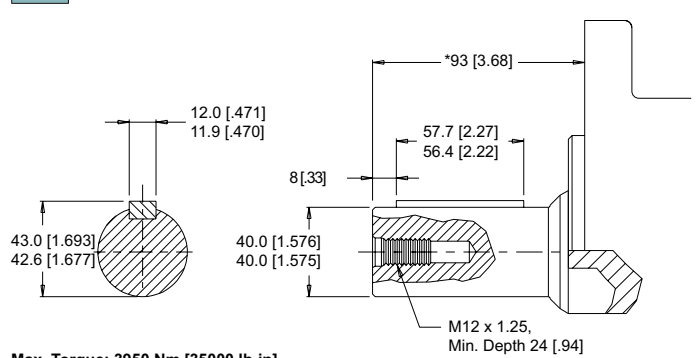
Max. Torque: 2250 Nm [19900 lb-in]

**30** 1-1/2" Straight



Max. Torque: 2230 Nm [19800 lb-in]

**36** 40mm Straight

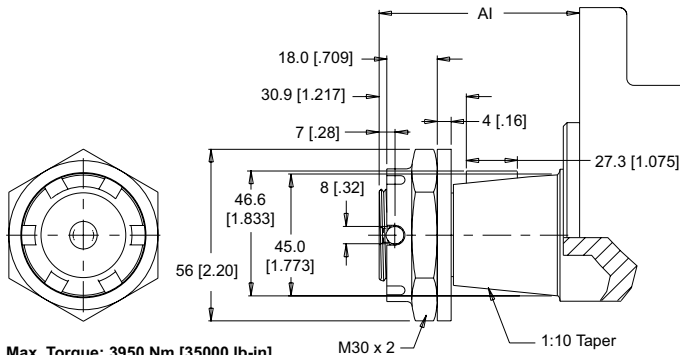


Max. Torque: 3950 Nm [35000 lb-in]

► \*Shaft lengths may vary ± 0.8 [.030]

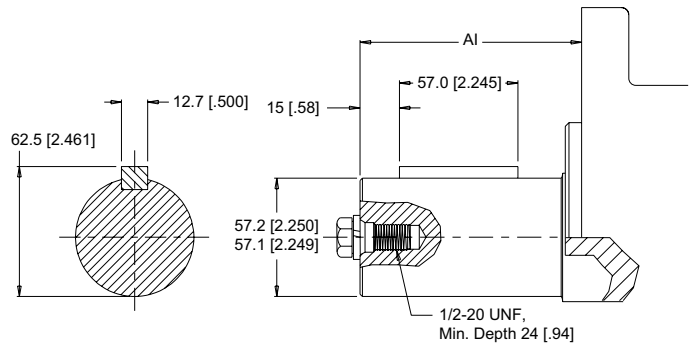
**SHAFTS**

**38** 45mm Tapered



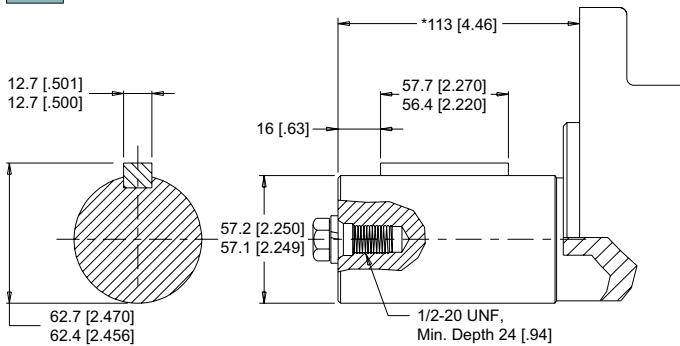
Max. Torque: 3950 Nm [35000 lb-in]

**47** 2-1/4" Straight Extended



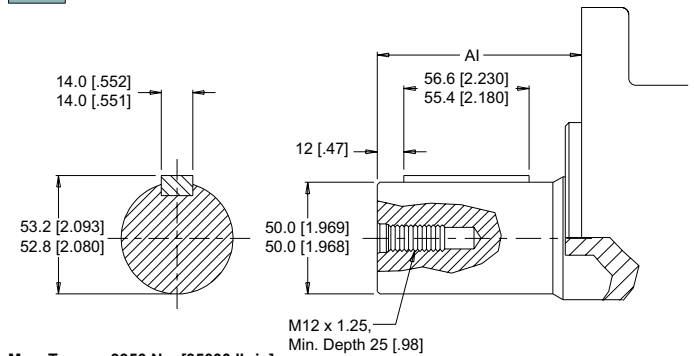
Max. Torque: 3950 Nm [35000 lb-in]

**40** 2-1/4" Straight



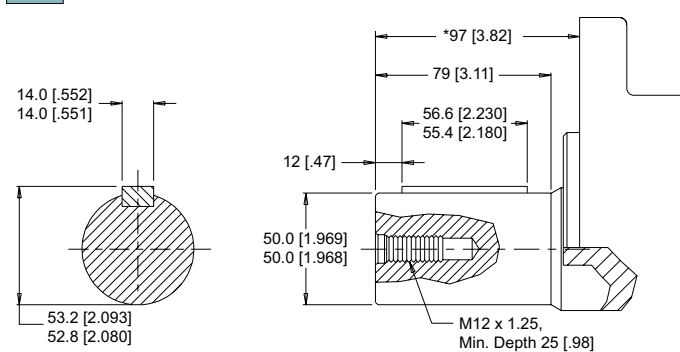
Max. Torque: 3950 Nm [35000 lb-in]

**68** 50mm Straight Extended



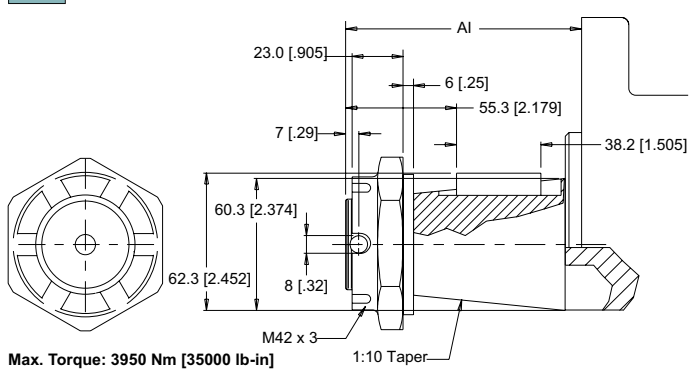
Max. Torque: 3950 Nm [35000 lb-in]

**41** 50mm Straight



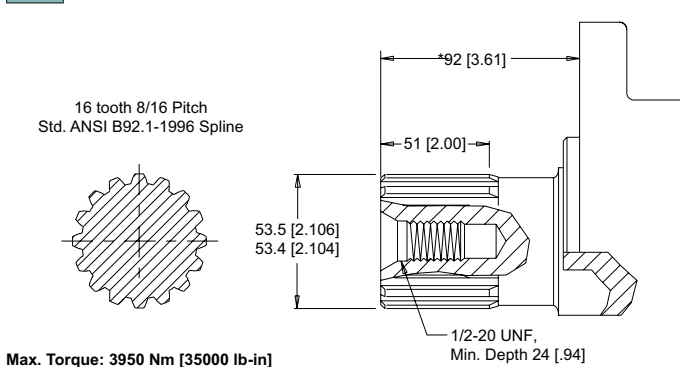
Max. Torque: 3950 Nm [35000 lb-in]

**D3** 60mm Tapered



Max. Torque: 3950 Nm [35000 lb-in]

**42** 16 Tooth Spline



Max. Torque: 3950 Nm [35000 lb-in]

**MOUNTING / SHAFT LENGTH CHART**

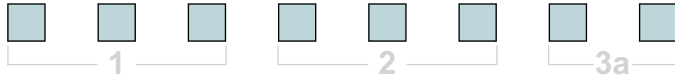
Dimension AI is the overall distance from the motor mounting surface to the end of the shaft and is referenced on detailed shaft drawings above.

AI	D8 Wheel Mounts	W8 Wheel Mounts
#	mm [in]	mm [in]
38	121 [4.78]	189 [7.45]
47	120 [4.73]	188 [7.40]
68	120 [4.73]	188 [7.40]
D3	144 [5.67]	212 [8.34]

► Shaft lengths vary ± 0.8 [.030]. The 38, 47, 68 & D3 shafts are only available on wheel mounts. All other shafts are only available on SAE C mounts.

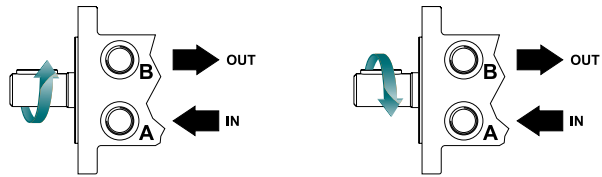


ORDERING INFORMATION



1. CHOOSE SERIES DESIGNATION

**800** Counterclockwise Rotation    **801** Clockwise Rotation



► The 800 & 801 series are bi-directional. Reversing the inlet hose will reverse shaft rotation.

2. SELECT A DISPLACEMENT OPTION

<b>260</b>	256 cm <sup>3</sup> /rev [15.6 in <sup>3</sup> /rev]	<b>625</b>	623 cm <sup>3</sup> /rev [38.1 in <sup>3</sup> /rev]
<b>300</b>	294 cm <sup>3</sup> /rev [17.9 in <sup>3</sup> /rev]	<b>735</b>	734 cm <sup>3</sup> /rev [44.8 in <sup>3</sup> /rev]
<b>375</b>	367 cm <sup>3</sup> /rev [22.4 in <sup>3</sup> /rev]	<b>910</b>	911 cm <sup>3</sup> /rev [55.6 in <sup>3</sup> /rev]
<b>450</b>	455 cm <sup>3</sup> /rev [27.8 in <sup>3</sup> /rev]	<b>1K0</b>	1027 cm <sup>3</sup> /rev [62.7 in <sup>3</sup> /rev]
<b>525</b>	525 cm <sup>3</sup> /rev [32.1 in <sup>3</sup> /rev]		

3a. SELECT MOUNT TYPE

▼ SIDE MOUNTS

<b>C8</b>	SAE C Mount (5" Pilot)
<b>D8</b>	Wheel Mount (160mm Pilot)
<b>E8</b>	SAE C Mount (125mm Pilot)
<b>W8</b>	Wheel Mount

3b. SELECT PORT SIZE

▼ SIDE PORT OPTIONS

<b>0</b>	1 1/4-12 UNF Split Flange
<b>7</b>	G 3/4 Offset Manifold
<b>8</b>	G 1 Offset Manifold
<b>9</b>	1 5/16-12 UNF, Offset



4. SELECT A SHAFT OPTION

<b>23</b>	14 Tooth Spline	<b>41</b>	50mm Straight
<b>30</b>	1-1/2" Straight	<b>42</b>	16 Tooth Spline
<b>33</b>	17 Tooth Spline	<b>47</b>	2-1/4" Straight Extended
<b>36</b>	40mm Straight	<b>68</b>	50mm Straight Extended
<b>38</b>	45mm Tapered	<b>D3</b>	60mm Tapered
<b>40</b>	2-1/4" Straight		

► The 38, 47, 68 & D3 shafts are available on wheel mounts only. All other shafts are available on SAE C mounts only.

5. SELECT A PAINT OPTION

<b>A</b>	Black
<b>B</b>	Black, Unpainted Mounting Surface
<b>Z</b>	No Paint

6. SELECT A VALVE CAVITY / CARTRIDGE OPTION

<b>A</b>	None
----------	------

7. SELECT AN ADD-ON OPTION

<b>A</b>	Standard
----------	----------

8. SELECT A MISCELLANEOUS OPTION

<b>AA</b>	None
-----------	------

## North America

White Drive Products, Inc.  
P.O. Box 1127  
Hopkinsville, KY. USA 42241  
Phone: +1.270.885.1110  
Fax: +1.270.886.8462  
infousa@whitedriveproducts.com

## Europe

White Drive Products GmbH  
Mannsnetterstrasse 34  
D-88145 Opfenbach, Germany  
Phone: +49.8385.924988.0  
Fax: +49.8385.924988.9  
infoeu@whitedriveproducts.com

## Asia

White (China) Drive Products Co., Ltd.  
1-8 Ning Zhen Gong Lu  
Zhenjiang, 212021, Jiangsu, China  
Phone: +86 511 5729988  
Fax: +86 511 5728921  
infochina@whitedriveproducts.com



Delivering The Power  
To Get Work Done!



whitedriveproducts