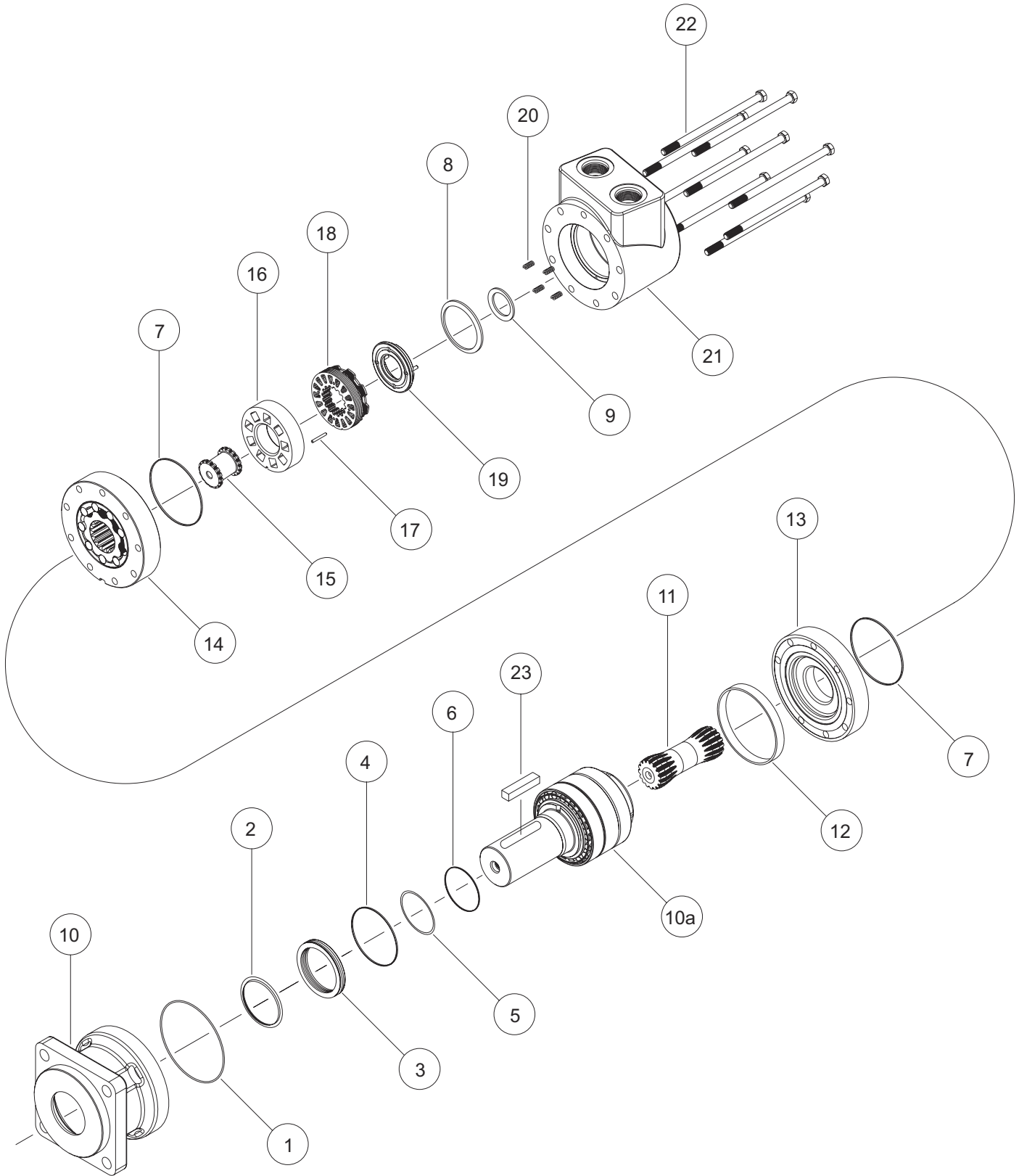


# D9 (800) Series



# D9 (800) SERIES MOTOR COMPONENTS

## SEAL KIT 800888200

DESCRIPTION	EXP. VIEW ITEM #	KIT
HOUSING SEAL	1	ITEMS # 1-9
DUST SEAL	2	INCLUDED IN
SEAL CARRIER INSERT	3	SEAL KIT
O-RING SEAL	4	800888200
BACKUP SHIM	5	
QUAD SEAL	6	
BODY SEALS (2)	7	
LARGE PISTON SEAL	8	
SMALL PISTON SEAL	9	

## MISCELLANEOUS KITS

DESCRIPTION	EXP. VIEW ITEM #	KIT
SPACER RING	12	800018012
WEAR PLATE	13	800012000
DRIVER	15	800014000
MANIFOLD	16	800015000
MANIFOLD PIN	17	800018009
COMMUTATOR	18	800012001
ENDCOVER PISTON	19	800018004
PISTON SPRINGS (4)	20	800018007
2000 PSI RELIEF VALVE	NOT SHOWN	800018039
2500 PSI RELIEF VALVE	NOT SHOWN	800018047
3000 PSI RELIEF VALVE	NOT SHOWN	800018028

## ROTORS, DRIVE LINKS, AND BOLTS

WHEN CHANGING MOTOR DISPLACEMENTS, A MATCHING ROTOR, DRIVE LINK, AND BOLT SET KIT MUST BE ORDERED.

EXPLODED VIEW ITEM #	14	14	11	22
DISPLACEMENT	STANDARD ROTOR KIT	FREETURN ROTOR KIT	DRIVE LINK KIT	BOLT SET KIT
260	800000260	800001260	800014013	800885260
300	800000300	800001300	800014014	800885300
375	800000375	800001375	800014015	800885375
450	800000450	800001450	800014016	800885450
525	800000525	800001525	800014017	800885525
625	800000625	800001625	800014018	800885625
735	800000735	800001735	800014019	800885735
910	800000910	800001910	800014020	800885910
1K0	8000001K0	8000011K0	800014021	8008851K0

## HOUSING/SHAFT AND RELATED COMPONENTS KITS

HOUSING/SHAFT KITS COME WITH RELATED SHAFT COMPONENTS (i.e. keys, nuts, etc.)

TO ORDER INDIVIDUAL SHAFT COMPONENTS (i.e. keys, nuts, bolts, washers or wire rings) USE THE KIT NUMBER FOR EACH INDIVIDUAL PART.

DUE TO THE SPECIAL TOOLING AND PROCESSES USED IN BUILDING UP THE HOUSING AND SHAFT, IT IS NECESSARY TO OFFER THE HOUSING SHAFT AND ALL OTHER INTERNAL HOUSING COMPONENTS AS A SINGLE KIT.

EXPLODED VIEW ITEM #	10/10a	18	NOT SHOWN	NOT SHOWN	NOT SHOWN
DESCRIPTION	HOUSING/SHAFT KIT	KEY KIT	NUT KIT	BOLT KIT	WASHER KIT
C MOUNT WITH 2-1/4" STRAIGHT (C8 + 40)	800130101	700669105	---	700669305	700669306
C MOUNT WITH 17 TOOTH SPLINE (C8 + 33)	800130102	---	---	---	---
C MOUNT WITH 50MM STRAIGHT (C8 + 41)	800130103	700669102	---	---	---
C MOUNT WITH 16 TOOTH SPLINE (C8 + 42)	800130105	---	---	---	---
C MOUNT WITH 40MM STRAIGHT (C8 + 36)	800130106	700669104	---	---	---
C MOUNT WITH 1-1/2" STRAIGHT (C8 + 30)	800130107	50072459	---	---	---
C MOUNT WITH 14 TOOTH SPLINE (C8 + 23)	800130109	---	---	---	---
C MOUNT WITH 1-1/2" STRAIGHT EXT (C8 + 32)	800130115	700669106	---	---	---
125MM C MOUNT WITH 2-1/4" STRAIGHT (E8 + 40)	800130401	700669105	---	700669305	700669306
125MM C MOUNT WITH 17 TOOTH SPLINE (E8 + 33)	800130402	---	---	---	---
125MM C MOUNT WITH 50MM STRAIGHT (E8 + 41)	800130403	700669102	---	---	---
125MM C MOUNT WITH 16 TOOTH SPLINE (E8 + 42)	800130405	---	---	---	---
125MM C MOUNT WITH 40MM STRAIGHT (E8 + 36)	800130406	700669104	---	---	---
125MM C MOUNT WITH 1-1/2" STRAIGHT (E8 + 30)	800130407	50072459	---	---	---
125MM C MOUNT WITH 14 TOOTH SPLINE (E8 + 23)	800130409	---	---	---	---
125MM C MOUNT WITH 1-1/2" STRAIGHT EXT (E8 + 32)	800130415	700669106	---	---	---
160MM PILOT WITH 45MM TAPERED (D8 + 38)	800130204	---	---	---	---
160MM PILOT WITH 60MM TAPERED (D8 + 45)	800130208	700669103	700669303	---	---
160MM PILOT WITH 2-1/4" STRAIGHT EXT (D8 + 47)	800130210	700669105	---	700669305	700669306
160MM PILOT WITH 50MM STRAIGHT EXT (D8 + 68)	800130211	700669102	---	---	---
160MM PILOT WITH 2-1/4" TAPERED (D8 + 72)	800130213	800018026	800018025	---	---
160MM PILOT WITH 55MM TAPERED (D8 + 51)	800130214	700669107	700669303	700669306	---
WHEEL MOUNT WITH 45MM TAPERED (W8 + 38)	800130304	---	---	---	---
WHEEL MOUNT WITH 60MM TAPERED (W8 + 45)	800130308	700669103	700669303	---	---
WHEEL MOUNT WITH 2-1/4" STRAIGHT EXT (W8 + 47)	800130310	700669105	---	700669305	700669306
WHEEL MOUNT WITH 50MM STRAIGHT EXT (W8 + 68)	800130311	700669102	---	---	---
WHEEL MOUNT WITH 2-1/4" TAPERED (W8 + 72)	800130313	800018026	800018025	---	---
WHEEL MOUNT WITH 55MM TAPERED (W8 + 51)	800130314	700669107	700669303	700669306	---

## ENDCOVER KITS

(EXPLODED VIEW ITEM #21)

DESCRIPTION	STANDARD ENDCOVER KIT	VALVE CAVITY ENDCOVER KIT	INTERNAL DRAIN ENDCOVER KIT	VALVE CAVITY & INTERNAL DRAIN ENDCOVER KIT
#0- 1-1/4" SPLIT FLANGE	800016001	---	---	---
#7- 3/4" BSP.F	800016003	---	---	---
#8- 1" BSP.F	800016002	---	---	---
1-5/16" O-RING	800016000	800016004	---	---