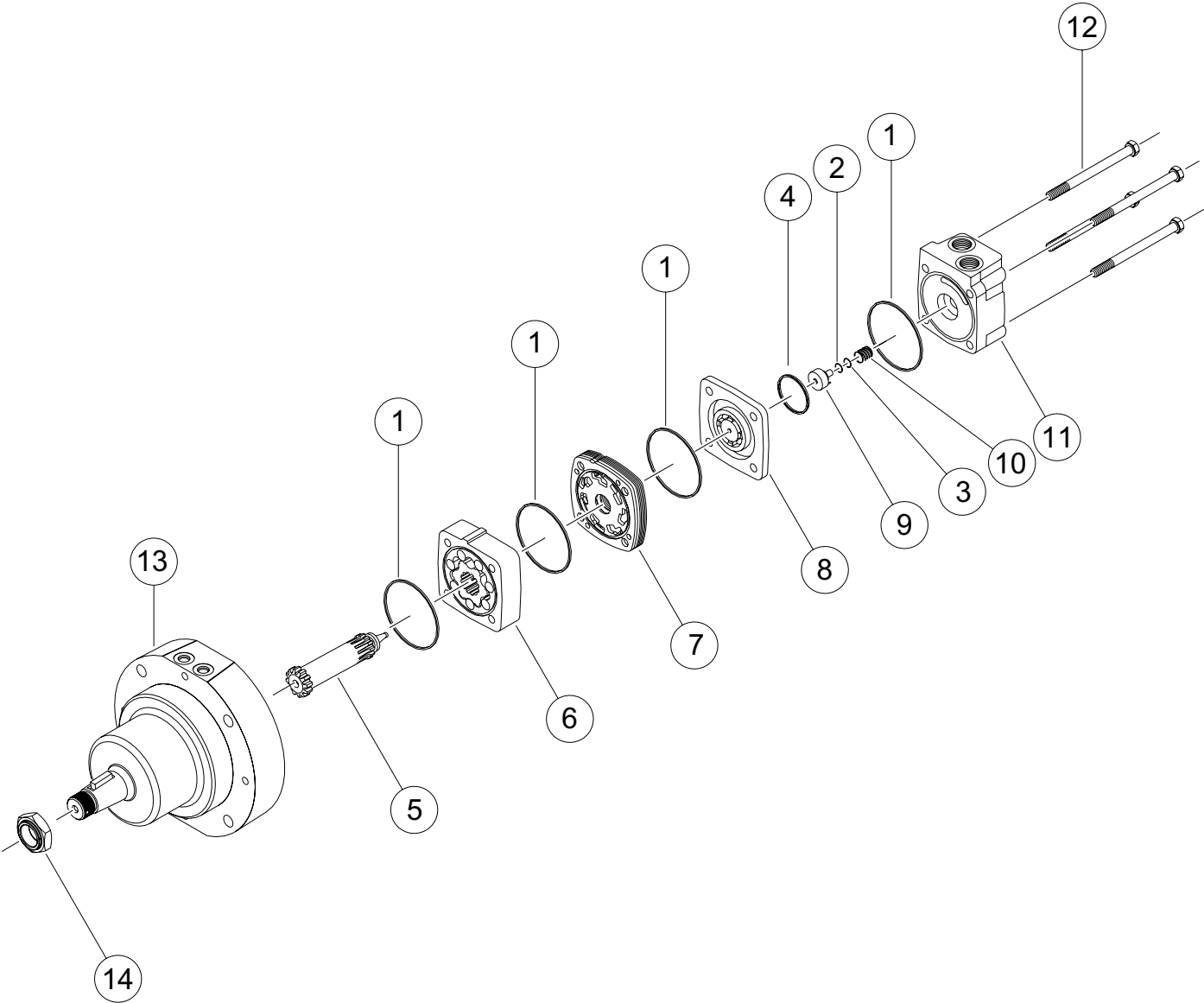


# HK (315) Series



# HK (315) SERIES MOTOR COMPONENTS

## SEAL KIT 300333750

DESCRIPTION	EXP. VIEW ITEM #	KIT
BODY SEALS (4)	1	ITEMS # 1-4
PISTON O-RING	2	INCLUDED IN
BACK UP SEAL	3	SEAL KIT
COMMUTATOR SEAL	4	300333750

## MISCELLANEOUS KITS

DESCRIPTION	EXP. VIEW ITEM #	KIT
MANIFOLD	7	300015008
COMMUTATOR ASSEMBLY	8	300012013
ENDCOVER PISTON	9	300018056
PISTON SPRING	10	300018059
1000 PSI RELIEF VALVE	NOT SHOWN	500018228
2000 PSI RELIEF VALVE	NOT SHOWN	500018231
3000 PSI RELIEF VALVE	NOT SHOWN	500018221
1.00-20 UNEF SLOTTED NUT	14	500449304
1.00-20 UNEF SOLID NUT	14	500449303
1.00-20 UNEF LOCK NUT	14	300339303P
1.125-18 UNEF SLOTTED NUT	14	700018038
1.125-18 UNEF SOLID NUT	14	700018054

## ROTORS, DRIVE LINKS AND BOLTS

WHEN CHANGING MOTOR DISPLACEMENTS, A MATCHING ROTOR AND BOLT SET KIT MUST BE ORDERED. A NEW DRIVE LINK KIT MAY BE NECESSARY.

EXPLODED VIEW ITEM #	6	6	5	12	12
DISPLACEMENT	STANDARD ROTOR KIT	FREETURN ROTOR KIT	DRIVE LINK KIT	BOLT SET KIT	FOR OFFSET PORTS
050	300332003	300332003F	300014028	300334005	300334004L
080	300332004	300332004F	300014028	300334008	300334012
090	300332005	300332005F	300014028	300334008	300334014
110	300332006	300332006F	300014029	300334010	300334014
125	300332008	300332008F	300014029	300334003L	300334018
160	300332010	300332010F	300014030	300334012	300334012L
200	300332012	300332012F	300014030	300334014	300335110
250	300332014	300332014F	300014027	300334018	300334018L
300	300332018	300332018F	300014027	300335014	300335016
320	300332020	300332020F	300014031	300334024	300334024L
400	300332024	300332024F	300014031	300334024	300334024L

## HOUSING KITS

(EXPLODED VIEW ITEM #13)

HOUSING KITS INCLUDE ALL INTERNAL COMPONENTS, SHAFT, & SHAFT KEY

DESCRIPTION	HOUSING KIT
#W2 & W8- SHORT PILOT WITH 1-1/4" TAPERED SHAFT	315131042
#W2 & W8- SHORT PILOT WITH 1-1/2" TAPERED SHAFT	315131043
#WB & WC- LONG PILOT WITH 1-1/4" TAPERED SHAFT	315131142
#WB & WC- LONG PILOT WITH 1-1/2" TAPERED SHAFT	315131143

## ENDCOVER KITS

(EXPLODED VIEW ITEM #11)

ENDCOVER KITS COME ASSEMBLED WITH EXPLODED VIEW ITEMS # 2, 3, 9 & 10.

TO ORDER A RELIEF VALVE FOR THE VALVE CAVITY ENDCOVERS, SEE THE MISCELLANEOUS KITS LISTING ABOVE FOR RELIEF VALVE KIT #S.

DESCRIPTION	STANDARD ENDCOVER KIT	VALVE CAVITY ENDCOVER KIT
#5- 9/16" O-RING SIDE PORTS	300160000	300160000R
#6- 1-1/16" O-RING SIDE PORTS	300160001	---
#7- 1/2" BSP.F SIDE PORTS	300160002	---
#2- 1/2" BSP.F REAR PORTS	300160003	---
#9- 3/8" BSP.F SIDE PORTS	300160004	---
#1- 7/8" O-RING OFFSET PORTS	300160006	---
#1- 7/8" O-RING REAR PORTS	300160007	300160007R
#2- 1/2" BSP.F OFFSET PORTS	300160008	---
#3- 1/2" BSP.F OFFSET MANIFOLD PORTS	300160009	---