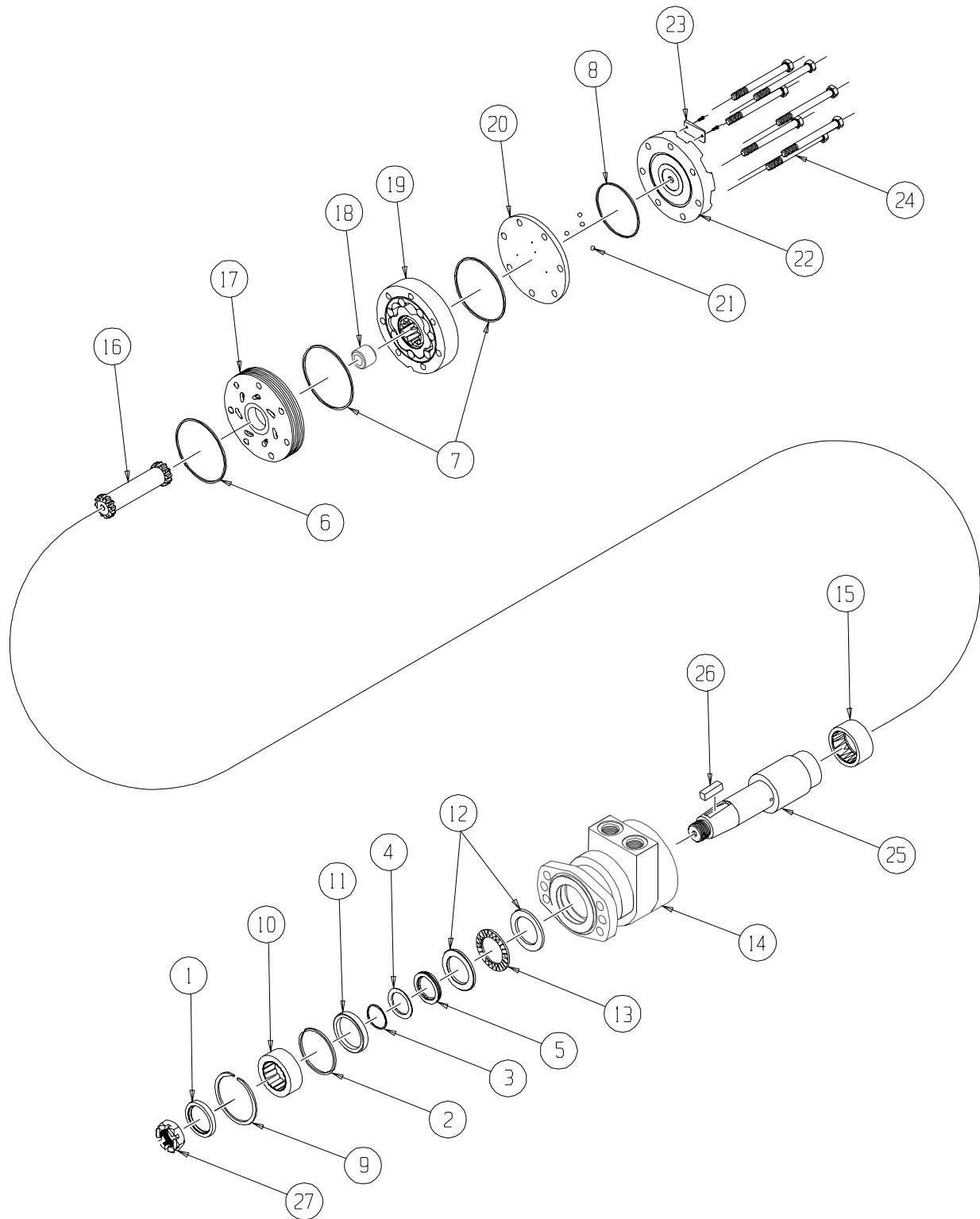


# RE (530) Series SAE "A" Flange



# RE (530) SERIES "A" HOUSING MOTOR COMPONENTS

## SEAL KIT 700666000

DESCRIPTION	EXP. VIEW ITEM #	KIT
DUST SEAL	1	
HIGH PRESSURE SEAL	2	
METAL BACKUP SHIM	3	ITEMS # 1-8
TEFLON BACKUP SEAL	4	INCLUDED IN
SHAFT SEAL	5	SEAL KIT
REAR HOUSING SEAL	6	700666000
BODY SEALS (2)	7	
ENDCOVER SEAL	8	

## MISCELLANEOUS KITS

DESCRIPTION	EXP. VIEW ITEM #	KIT
RETAINING SNAP RING	9	500018141
1.5" BEARING	10	500018241
SEAL CARRIER	11	500018238
THRUST WASHER	12	700018041
THRUST BEARING	13	700018033
REAR HOUSING BEARING	15	700018012
FORWARD MANIFOLD (CCW OR "0")	17	500015006
REVERSE MANIFOLD (CW OR "1")	17	500015007
BALANCE PLATE (3 BALLS INCLD)	20 & 21	500012001
STEEL BALL	21	500018048
ENDCOVER	22	500016001
1000 PSI RELIEF VALVE	NOT SHOWN	500018228
2000 PSI RELIEF VALVE	NOT SHOWN	500018231
3000 PSI RELIEF VALVE	NOT SHOWN	500018221
1.125-18 UNEF SLOTTED HEX NUT	30	700018038
1.125-18 UNEF SOLID HEX NUT	30	700018054

## ROTORS, DRIVE LINKS AND SPACERS, AND BOLTS

WHEN CHANGING MOTOR DISPLACEMENTS, A MATCHING ROTOR AND BOLT SET KIT MUST BE ORDERED. A NEW DRIVE LINK KIT MAY BE NECESSARY. DRIVE LINK SPACERS ARE INCLUDED IN DRIVE LINK KITS, BUT MAY ALSO BE ORDERED SEPERATELY BY USING THE DRIVE LINK SPACER KIT NUMBER

EXPLODED VIEW ITEM #	19	19	16	18	24
DISPLACEMENT	STANDARD ROTOR KIT	FREETURN ROTOR KIT	DRIVE LINK KIT	DRIVE LINK SPACER KIT	BOLT SET KIT
120	500087005	500087008	500014009	---	500445006
160	500137005	500137011	500014009	---	500445006
200	500167004	500167011	500014009	500018075	500445012
230	500147002	500147004	500014009	500018185	500445014
260	500227000	500227004	500014009	500018076	500445014
300	500247005	500247011	500014007	---	500445018
350	500207000	500207004	500014008	500018076	500445026
375	500307005	500307011	500014008	---	500445024
470	500357003	500357005	500014008	500018076	500445026
540	500407005	500407011	500014008	500018077	500445032
750	500607005	500607011	500014008	500018078	500445045

## HOUSING KITS

(EXPLODED VIEW ITEM #14)

STANDARD HOUSING KITS INCLUDE REAR BEARING (#15) INSTALLED IN THE HOUSING.

DESCRIPTION	HOUSING KIT
#A51- 6-HOLE SAE "A" STYLE FLANGE W/ 7/8" O-RING PORTS	500136228
#A51- 6-HOLE SAE "A" STYLE FLANGE W/ 7/8" O-RING PORTS & VALVE CAVITY	500139228
#A58- 6-HOLE SAE "A" STYLE FLANGE W/ 1/2" BSP.F PORTS	500136628
#A58- 6-HOLE SAE "A" STYLE FLANGE W/ 1/2" BSP.F & VALVE CAVITY	500139628

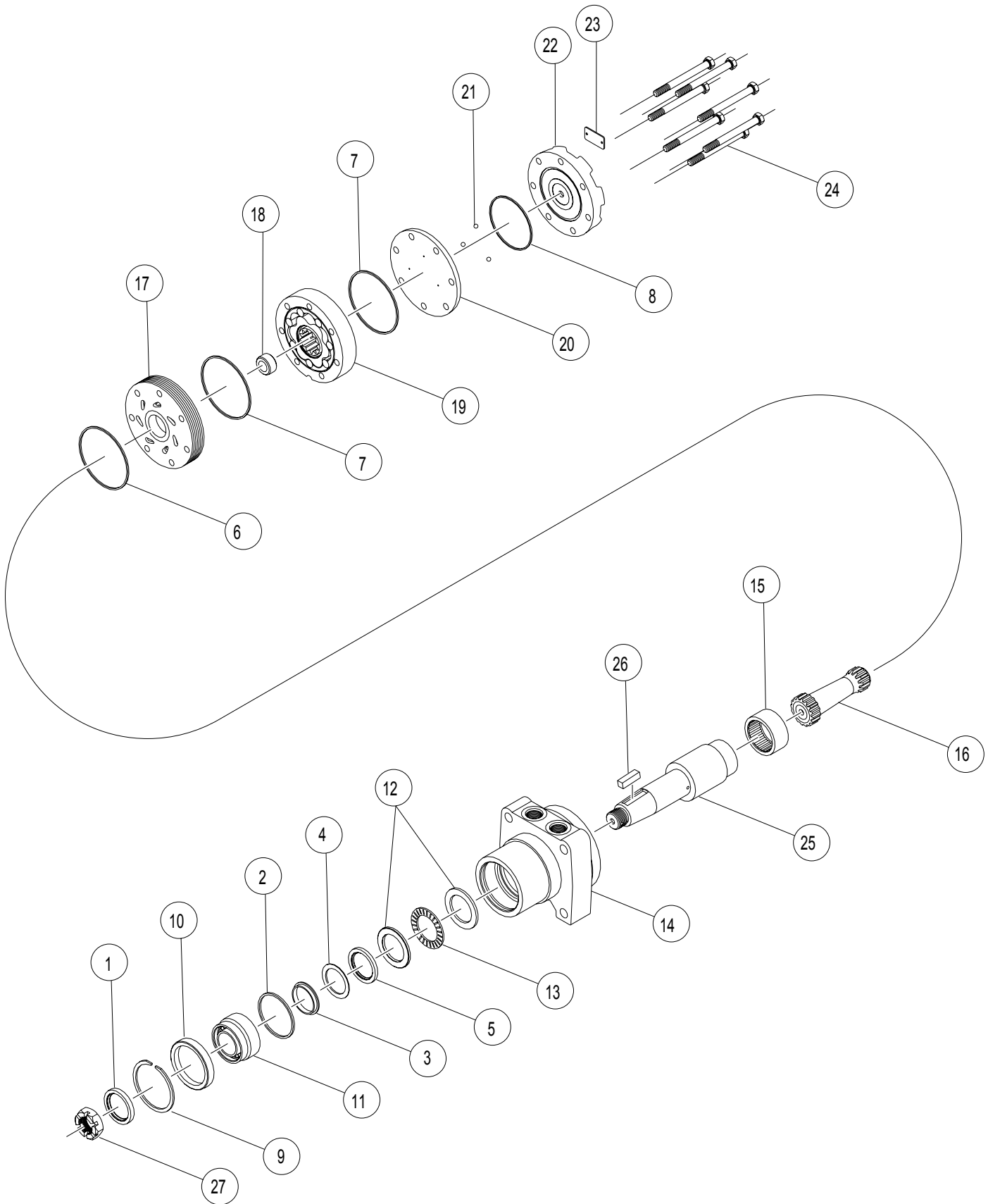
## SHAFTS AND RELATED COMPONENTS KITS

SHAFT KITS COME WITH RELATED SHAFT COMPONENTS (i.e. keys, nuts, etc.)

TO ORDER INDIVIDUAL SHAFT COMPONENTS (i.e. keys, nuts, bolts, washers or wire rings) USE THE KIT NUMBER FOR EACH INDIVIDUAL PART.

EXPLODED VIEW ITEM #	25	26	27	NOT SHOWN
DESCRIPTION	SHAFT KIT	KEY KIT	NUT KIT	WIRE RING KIT
#30- 1-1/2" STRAIGHT	500011213	300339105	SEE MISC.	500449200
#31- 1-1/2" TAPERED	500011305	500449105	KITS LIST	---
#27- 35MM STRAIGHT	500011219	500449103		---

# RE (530) Series "R" Housing



# RE (530) SERIES "R" HOUSING MOTOR COMPONENTS

## SEAL KIT 700666000

DESCRIPTION	EXP VIEW ITEM #	KIT
DUST SEAL	1	
HIGH PRESSURE SEAL	2	
METAL BACKUP SHIM	3	ITEMS # 1-8
TEFLON BACKUP SEAL	4	INCLUDED IN
SHAFT SEAL	5	SEAL KIT
REAR HOUSING SEAL	6	700666000
BODY SEALS (2)	7	
ENDCOVER SEAL	8	

## MISCELLANEOUS KITS

DESCRIPTION	EXPLODED VIEW ITEM #	KIT
RETAINING SNAP RING	9	700018013
BEARING SPACER	10	700018085
1.5" BEARING	11	300018021
THRUST WASHER	12	700018041
THRUST BEARING	13	700018033
REAR HOUSING BEARING	15	700018012
FORWARD MANIFOLD (CCW OR "0")	17	500015006
REVERSE MANIFOLD (CW OR "1")	17	500015007
BALANCE PLATE (3 BALLS INCLD)	20 & 21	500012001
STEEL BALL	21	500018048
ENDCOVER	22	500016001
1000 PSI RELIEF VALVE	NOT SHOWN	500018228
2000 PSI RELIEF VALVE	NOT SHOWN	500018231
3000 PSI RELIEF VALVE	NOT SHOWN	500018221
1.125-18 UNEF SLOTTED HEX NUT	28	700018038
1.125-18 UNEF SOLID HEX NUT	28	700018054
DUST SEAL ONLY	1	300018006

## ROTORS, DRIVE LINKS AND SPACERS, AND BOLTS

WHEN CHANGING MOTOR DISPLACEMENTS, A MATCHING ROTOR AND BOLT SET KIT MUST BE ORDERED. A NEW DRIVE LINK KIT MAY BE NECESSARY. DRIVE LINK SPACERS ARE INCLUDED IN DRIVE LINK KITS, BUT MAY ALSO BE ORDERED SEPERATELY BY USING THE DRIVE LINK SPACER KIT NUMBER.

EXPLODED VIEW ITEM #	19	19	16	18	24
DISPLACEMENT	STANDARD ROTOR KIT	FREETURN ROTOR KIT	DRIVE LINK KIT	DRIVE LINK SPACER KIT	BOLT SET KIT
120	500087005	500087008	500014009	---	500445006
160	500137005	500137011	500014009	---	500445006
200	500167004	500167011	500014009	500018075	500445012
230	500147002	500147004	500014009	500018185	500445014
260	500227000	500227004	500014039	---	500445014
300	500247005	500247011	500014007	---	500445018
350	500207000	500207004	500014008	500018076	500445026
375	500307005	500307011	500014008	---	500445024
470	500357003	500357005	500014008	500018076	500445026
540	500407005	500407011	500014008	500018077	500445032
750	500607005	500607011	500014008	500018078	500445045

## HOUSING KITS

(EXPLODED VIEW ITEM #14)

STANDARD HOUSING KITS INCLUDE REAR BEARING (#15) INSTALLED IN THE HOUSING.

DESCRIPTION	HOUSING KIT
#R31- WHEEL MOUNT WITH 7/8" O-RING	500132028
#R31- WHEEL MOUNT WITH 7/8" O-RING AND VALVE CAVITY	500135028

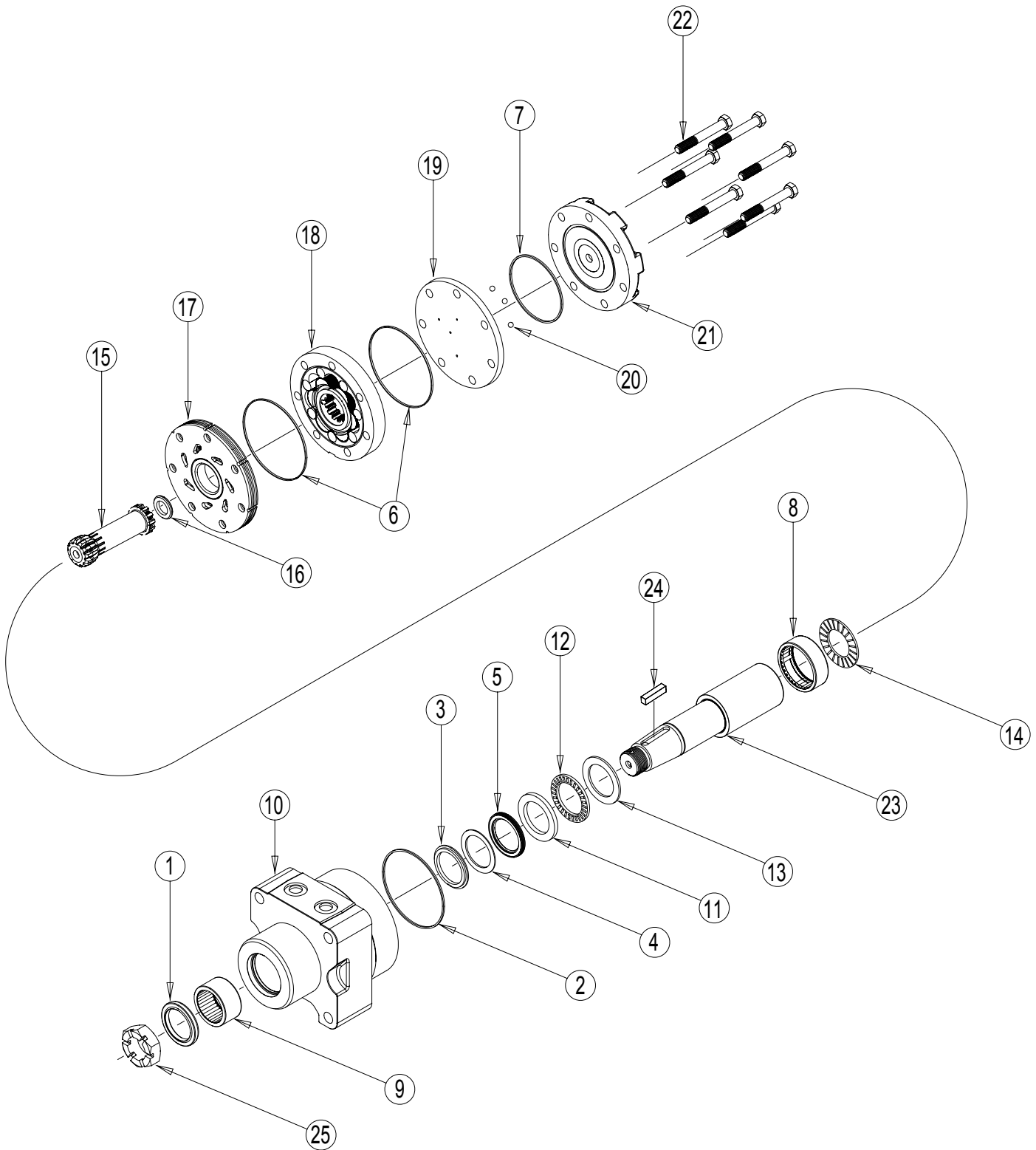
## SHAFTS AND RELATED COMPONENTS KITS

SHAFT KITS COME WITH RELATED SHAFT COMPONENTS (i.e. keys, nuts, etc.)

TO ORDER INDIVIDUAL SHAFT COMPONENTS (i.e. keys, nuts, bolts, washers or wire rings) USE THE KIT NUMBER FOR EACH INDIVIDUAL PART.

EXPLODED VIEW ITEM #	25	26	27	NOT SHOWN
DESCRIPTION	SHAFT KIT	KEY KIT	NUT KIT	WIRE RING KIT
#30- 1-1/2" STRAIGHT	500011213	300339105	SEE MISC.	500449200
#31- 1-1/2" TAPERED	500011305	500449105	KITS LIST	---

# RE (530) Series "T" Housing



# RE (530) SERIES "T" HOUSING MOTOR COMPONENTS

## MISCELLANEOUS KITS

DESCRIPTION	EXP. VIEW ITEM #	KIT
DUST SEAL	1	
HOUSING SEAL	2	
BACK UP RING	3	
BACK UP	4	ITEMS # 1-8
SHAFT SEAL	5	INCLUDED IN
BODY SEALS (2)	6	SEAL KIT
ENDCOVER SEAL	7	500444004
REAR HOUSING BEARING	8	

DESCRIPTION	EXPLODED VIEW ITEM #	KIT
FRONT HOUSING BEARING	9	530018000
FRONT THRUST WASHER	11	500018283
FRONT THRUST BEARING	12	500018282
THRUST WASHER	13	300018002
REAR THRUST BEARING	14	500018059
FORWARD MANIFOLD (CCW OR "0")	17	500015006
REVERSE MANIFOLD (CW OR "1")	17	500015007
BALANCE PLATE (3 BALLS INCLD)	19	500012001
STEEL BALL	20	500018048
ENDCOVER	21	500016001
1.125-18 UNEF SLOTTED HEX NUT	25	500449300
1.125-18 UNEF SOLID HEX NUT	25	700018054

## ROTORS, DRIVE LINKS AND SPACERS, AND BOLTS

WHEN CHANGING MOTOR DISPLACEMENTS, A MATCHING ROTOR AND BOLT SET KIT MUST BE ORDERED. A NEW DRIVE LINK KIT MAY BE NECESSARY. DRIVE LINK SPACERS ARE INCLUDED IN DRIVE LINK KITS, BUT MAY ALSO BE ORDERED SEPERATELY BY USING THE DRIVE LINK SPACER KIT NUMBER.

EXPLODED VIEW ITEM #	18	18	15	16	22
DISPLACEMENT	STANDARD ROTOR KIT	FREETURN ROTOR KIT	DRIVE LINK KIT	DRIVE LINK SPACER KIT	BOLT SET KIT
120	500087005	500087008	500014009	---	500445006
160	500137005	500137011	500014009	---	500445006
200	500167004	500167011	500014009	500018075	500445012
230	500147002	500147004	500014009	500018185	500445014
260	500227000	500227004	500014009	500018076	500445014
300	500247005	500247011	500014007	---	500445018
350	500207000	500207004	500014008	500018076	500445026
375	500307005	500307011	500014008	---	500445024
470	500357003	500357005	500014008	500018076	500445026
540	500407005	500407011	500014008	500018077	500445032
750	500607005	500607011	500014008	500018078	500445045

## HOUSING KITS

(EXPLODED VIEW ITEM #10)

DESCRIPTION	HOUSING KIT
#T31- WHEEL MOTOR WITH 7/8" O-RING	530013002
#T35- WHEEL MOTOR WITH 9/16" O-RING PORTS	530013000
#T38- WHEEL MOTOR WITH 1/2" BSP.F	530013001

## SHAFTS AND RELATED COMPONENTS KITS

SHAFT KITS COME WITH RELATED SHAFT COMPONENTS (i.e. keys, nuts, etc.)

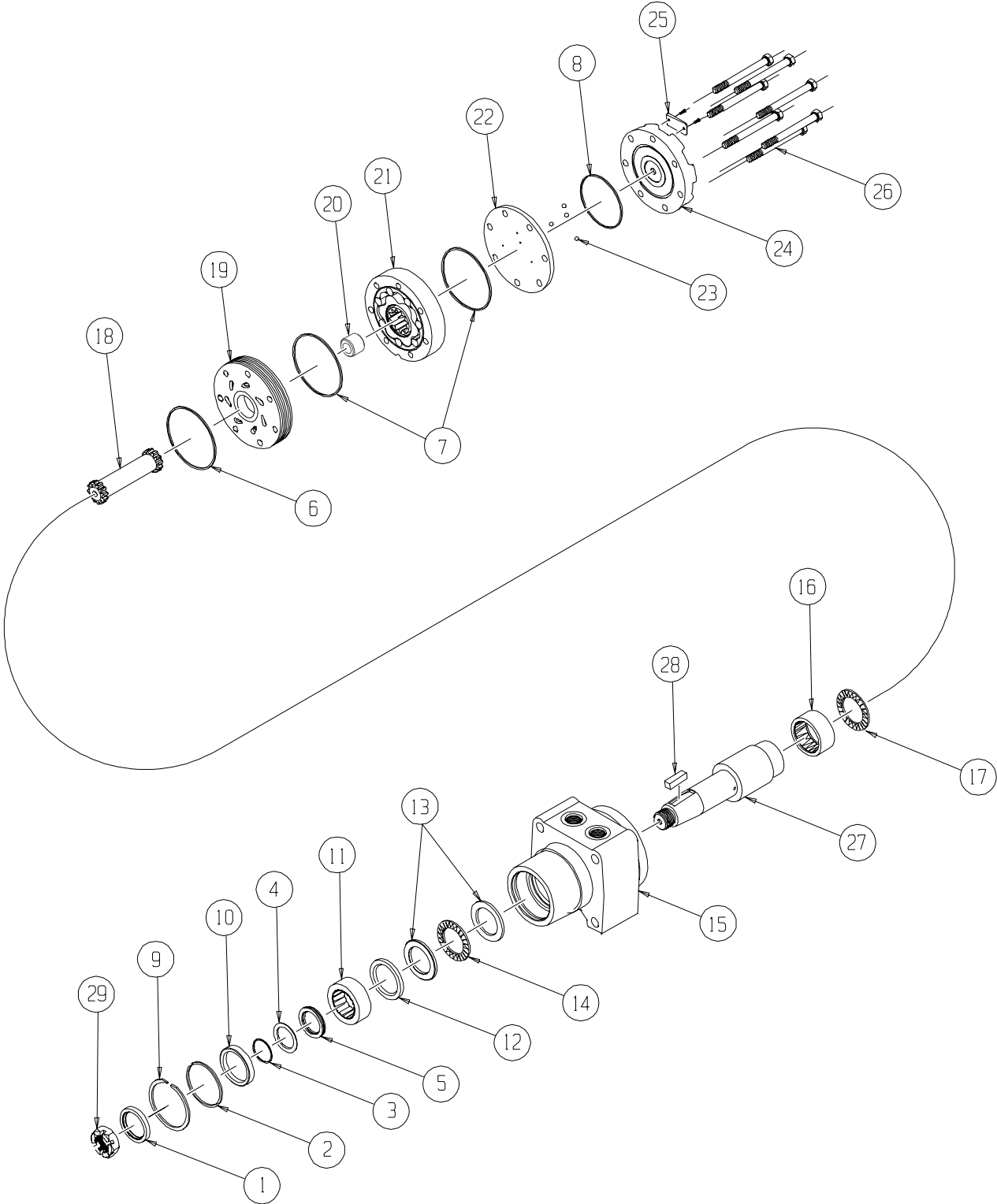
TO ORDER INDIVIDUAL SHAFT COMPONENTS (i.e. keys, nuts, bolts, washers or wire rings) USE THE KIT NUMBER FOR EACH INDIVIDUAL PART.

EXPLODED VIEW ITEM #	23	24	25
DESCRIPTION	SHAFT KIT	KEY KIT	NUT KIT
#31- 1-1/2" TAPERED	500011311	500449105	SEE MISC.

White Drive Products, Inc. Phone (270) 885-1110 Fax (270) 886-8462

Rev. 1.04

# RE (530) Series



# RE (530) SERIES "W" HOUSING MOTOR COMPONENTS

## SEAL KIT 700666000

DESCRIPTION	EXP. VIEW ITEM #	KIT
DUST SEAL	1	
HIGH PRESSURE SEAL	2	
METAL BACKUP SHIM	3	
TEFLON BACKUP SEAL	4	ITEMS # 1-8
SHAFT SEAL	5	INCLUDED IN
REAR HOUSING SEAL	6	SEAL KIT
BODY SEALS (2)	7	700666000
ENDCOVER SEAL	8	

## MISCELLANEOUS KITS

DESCRIPTION	EXPLODED VIEW ITEM #	KIT
RETAINING SNAP RING	9	500018249
SEAL CARRIER	10	500018238
1.5" BEARING	11	500018242
BEARING SPACER	12	500018248
THRUST WASHER	13	700018041
FRONT THRUST BEARING	14	700018033
REAR HOUSING BEARING	16	700018012
REAR THRUST BEARING	17	500018059
FORWARD MANIFOLD (CCW OR "0")	19	500015006
REVERSE MANIFOLD (CW OR "1")	19	500015007
BALANCE PLATE (3 BALLS INCLD)	22 & 23	500012001
STEEL BALL	23	500018048
ENDCOVER	24	500016001
1000 PSI RELIEF VALVE	NOT SHOWN	500018228
2000 PSI RELIEF VALVE	NOT SHOWN	500018231
3000 PSI RELIEF VALVE	NOT SHOWN	500018221
1.125-18 UNEF SLOTTED HEX NUT	30	700018038
1.125-18 UNEF SOLID HEX NUT	30	700018054
M24 X 1.5 SLOTTED HEX NUT (#46)	30	500449306

## ROTORS, DRIVE LINKS AND SPACERS, AND BOLTS

WHEN CHANGING MOTOR DISPLACEMENTS, A MATCHING ROTOR AND BOLT SET KIT MUST BE ORDERED. A NEW DRIVE LINK KIT MAY BE NECESSARY. DRIVE LINK SPACERS ARE INCLUDED IN DRIVE LINK KITS, BUT MAY ALSO BE ORDERED SEPARATELY BY USING THE DRIVE LINK SPACER KIT NUMBER

EXPLODED VIEW ITEM #	21	21	18	20	26
DISPLACEMENT	STANDARD ROTOR KIT	FREETURN ROTOR KIT	DRIVE LINK KIT	DRIVE LINK SPACER KIT	BOLT SET KIT
120	500087005	500087008	500014009	---	500445006
160	500137005	500137011	500014009	---	500445006
200	500167004	500167011	500014009	500018075	500445012
230	500147002	500147004	500014009	500018185	500445014
260	500227000	500227004	500014009	500018076	500445014
300	500247005	500247011	500014007	---	500445018
350	500207000	500207004	500014008	500018076	500445026
375	500307005	500307011	500014008	---	500445024
470	500357003	500357005	500014008	500018076	500445026
540	500407005	500407011	500014008	500018077	500445032
750	500607005	500607011	500014008	500018078	500445045

## HOUSING KITS

(EXPLODED VIEW ITEM #15)

STANDARD HOUSING KITS INCLUDE REAR BEARING (#17) INSTALLED IN THE HOUSING.

DESCRIPTION	HOUSING KIT
#W31- WHEEL MOTOR WITH 7/8" O-RING PORTS	500136728
#W38- WHEEL MOTOR WITH 1/2" BSP.F PORTS	500137728

## SHAFTS AND RELATED COMPONENTS KITS

SHAFT KITS COME WITH RELATED SHAFT COMPONENTS (i.e. keys, nuts, etc.)

TO ORDER INDIVIDUAL SHAFT COMPONENTS (i.e. keys, nuts, bolts, washers or wire rings) USE THE KIT NUMBER FOR EACH INDIVIDUAL PART.

EXPLODED VIEW ITEM #	27	28	29	NOT SHOWN
DESCRIPTION	SHAFT KIT	KEY KIT	NUT KIT	WIRE RING KIT
#31- 1-1/2" TAPERED	500011216	500449105		---
#22- 1-1/4" TAPERED	500011217	500449101	SEE MISC.	---
#30- 1-1/2" STRAIGHT	500011218	500449105	ABOVE	700449200
#28- 35MM TAPERED	500011310	500449104		---

White Drive Products, Inc. Phone (270) 885-1110 Fax (270) 886-8462

Rev. 1.04