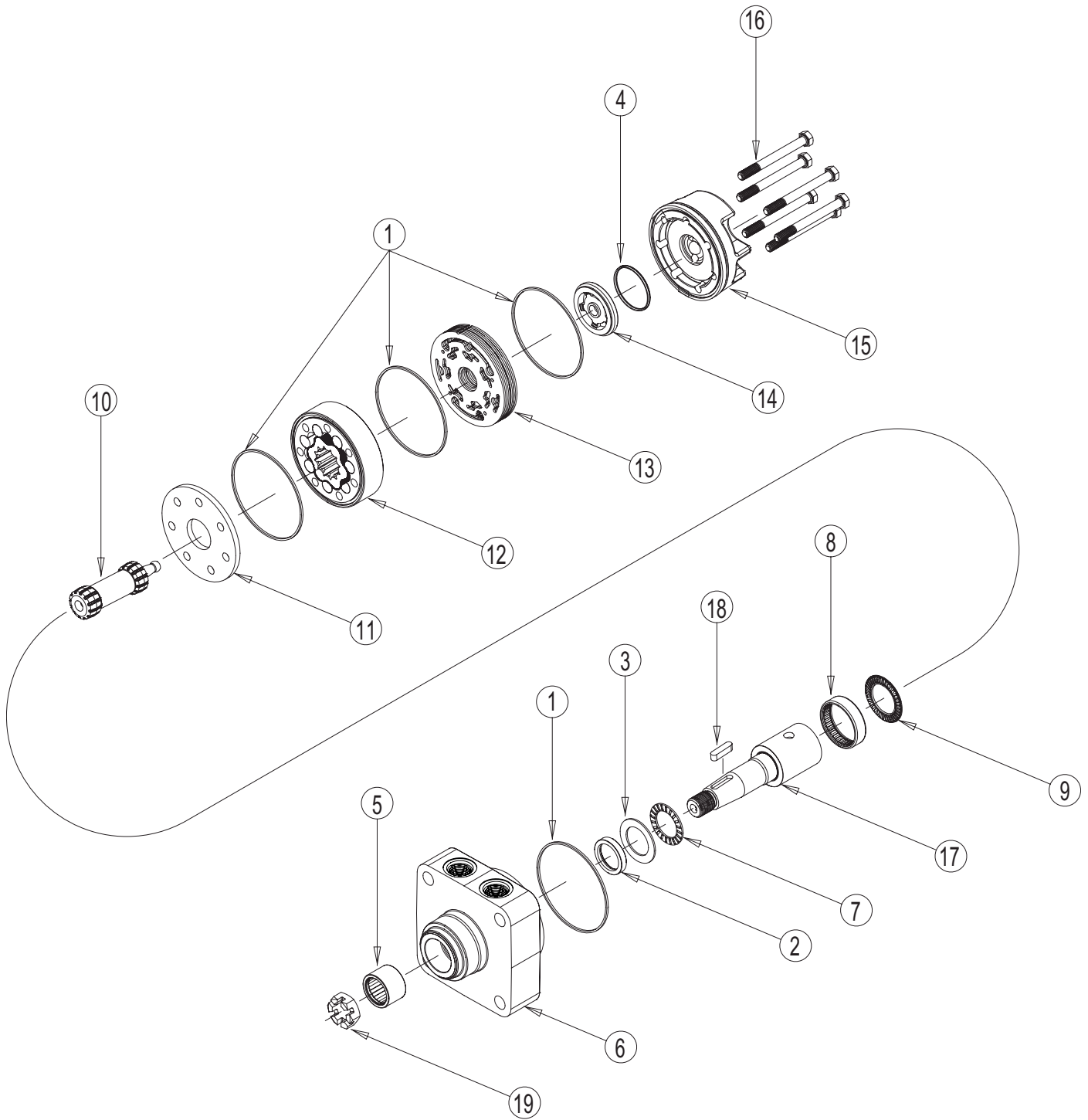


WG (275) SERIES MOTOR



WG (275) SERIES MOTOR COMPONENTS

SEAL KIT 270501001

| DESCRIPTION | EXP VIEW ITEM # | KIT |
|----------------------|-----------------|---|
| BODY SEAL (4) | 1 | ITEMS #1-4 & 8 INCLUDED IN SEAL KIT: 270501001 |
| SHAFT SEAL | 2 | |
| THRUST WASHER | 3 | |
| COMMUTATOR SEAL | 4 | |
| REAR HOUSING BEARING | 8 | |

MISCELLANEOUS KITS

| DESCRIPTION | EXPLODED VIEW ITEM # | KIT |
|-----------------------------|----------------------|-----------|
| BODY SEAL | 1 | 270018000 |
| FRONT HOUSING BEARING | 5 | 270018001 |
| FRONT THRUST BEARING | 7 | 270018011 |
| REAR HOUSING BEARING | 8 | 270018021 |
| REAR THRUST BEARING | 9 | 270018003 |
| WEAR PLATE | 11 | 270012000 |
| MANIFOLD | 13 | 270015007 |
| REVERSE MANIFOLD | 13 | 270015008 |
| COMMUTATOR | 14 | 270012001 |
| STANDARD ENDCOVER | 15 | 275016507 |
| 3/4" O-RING PORTED ENDCOVER | NOT SHOWN | 270016003 |
| LOCK NUT | NOT SHOWN | 270229301 |
| CASTLE NUT | 19 | 270229300 |

NOTE: EFFECTIVE NOVEMBER 9, 2009 THE STANDARD ENDCOVER THICKNESS WAS SHORTENED TO 19MM [.881 IN]. IF REPLACING A NON PORTED ENDCOVER WITH A THICKNESS GREATER THAN THAT, A STANDARD BOLT SET KIT NEEDS TO BE ORDERED ALONG WITH THE STANDARD ENDCOVER

ROTORS, DRIVE LINKS AND SPACERS, AND BOLTS

WHEN CHANGING MOTOR DISPLACEMENTS, A MATCHING DRIVE LINK KIT AND BOLT SET KIT MUST ALSO BE ORDERED.

| EXPLODED VIEW ITEM # | 12 | 12 | 10 | 16 | 16 |
|----------------------|--------------------|--------------------|----------------|--|--|
| DISPLACEMENT | STANDARD ROTOR KIT | FREETURN ROTOR KIT | DRIVE LINK KIT | BOLT SET KIT PORTED ENDCOVER OR STANDARD 40 MM [1.59 IN] | BOLT SET KIT STANDARD ENDCOVER 19 MM [.881 IN] |
| 040 | 270000040 | 270001040 | 270014010 | 270005040 | 275005040 |
| 045 | 270000045 | 270001045 | 270014010 | 270005045 | 275005045 |
| 060 | 270000060 | 270001060 | 270014009 | 270005060 | 275005060 |
| 070 | 270000070 | 270001070 | 270014008 | 270005070 | 275005070 |
| 090 | 270000090 | 270001090 | 270014007 | 270005090 | 275005090 |
| 100 | 270000100 | 270001100 | 270014006 | 270005100 | 275005100 |
| 130 | 270000130 | 270001130 | 270014001 | 270005130 | 275005130 |
| 160 | 270000160 | 270001160 | 270014005 | 270005160 | 275005160 |
| 200 | 270000200 | 270001200 | 270014004 | 270005200 | 275005200 |
| 230 | 270000230 | 270001230 | 270014003 | 270005230 | 275005230 |
| 320 | 270000320 | 270001320 | 270014002 | 270005320 | 275005320 |
| 400 | 270000400 | 270001400 | 270014002 | 270005400 | 275005400 |

HOUSING KITS

(EXPLODED VIEW ITEM #6)

| DESCRIPTION | HOUSING KIT | DESCRIPTION | HOUSING KIT |
|--|-------------|-----------------------------------|-------------|
| #A10 - 2-HOLE W/ 1/2" NPT | 270013007 | #F38 - 4-HOLE W/ 1/2" BSP.F | 270013016 |
| #A11 - 2-HOLE W/ 7/8" O-RING | 270013004 | #F26 - 4-HOLE W/O PORTS | 270013009 |
| #A18 - 2-HOLE W/ 1/2" BSP.F | 270013006 | #W30 - WHEEL MOUNT W/ 1/2" NPT | 270013010 |
| #A68 - 2-HOLE W/ 1/2" BSP.F - 7.1 MM [.278 IN] PILOT | 270013017 | #W31 - WHEEL MOUNT W/ 7/8" O-RING | 270013008 |
| #A06 - 2-HOLE W/O PORTS | 270013011 | #W38 - WHEEL MOUNT W/ 1/2" BSP.F | 270013018 |
| #F30 - 4-HOLE W/ 1/2" NPT | 270013000 | #W26 - WHEEL MOUNT W/O PORTS | 270013005 |
| #F31 - 4-HOLE W/ 7/8" O-RING | 270013001 | | |

SHAFTS AND RELATED COMPONENTS KITS

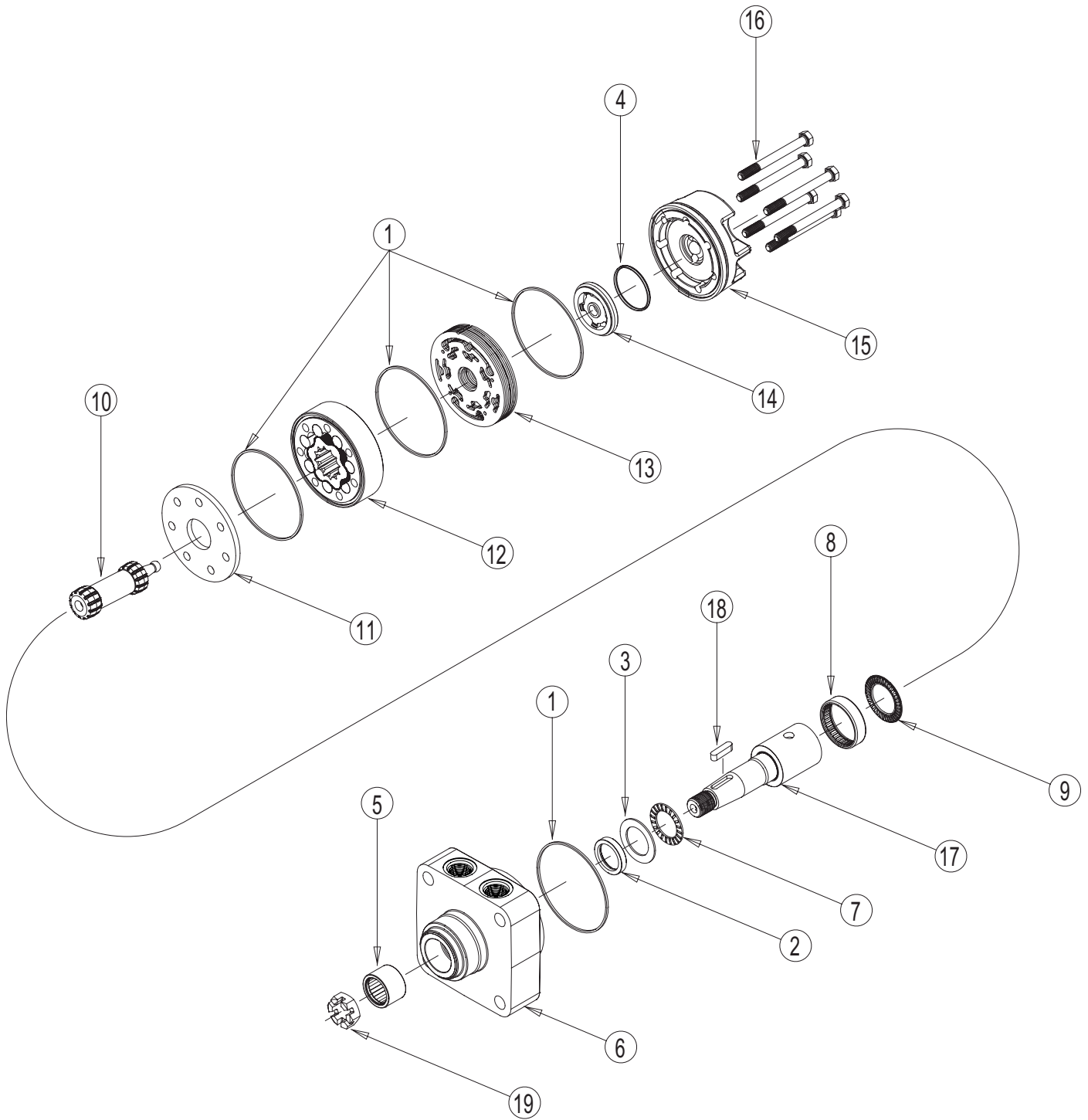
SHAFT KITS COME WITH RELATED SHAFT COMPONENTS (i.e. keys, nuts, etc.) TO ORDER INDIVIDUAL KEYS, USE THE KEY KIT NUMBER. TO ORDER NUT KITS (FOR #13 OR #14 SHAFT), SEE MISCELLANEOUS KITS LIST ABOVE.

| EXPLODED VIEW ITEM # | 22 | 23 |
|----------------------------------|-----------|-----------|
| DESCRIPTION | SHAFT KIT | KEY KIT |
| #10 - 1" STRAIGHT | 270011200 | 270229100 |
| #15 - 1" STRAIGHT EXTENDED | 270011202 | 270229100 |
| #12 - 25MM STRAIGHT (8MM KEY) | 270011201 | 270229101 |
| #89 - 25MM STRAIGHT MODIFIED | 270011206 | 270229101 |
| #14 - 1" TAPERED (SAE STANDARD) | 270011301 | 270229103 |
| #02 - 1" 6B SPLINE | 270011600 | ---- |
| #13 - 1" TAPERED (SHORT VERSION) | 270011302 | 270229102 |

White Drive Products, Inc. Phone (270) 885-1110 Fax (270) 886-8462

REV. 3.16.10

WG (280) SERIES MOTOR



WG (280) SERIES MOTOR COMPONENTS

SEAL KIT 280501001

| DESCRIPTION | EXP VIEW ITEM # | KIT |
|----------------------|-----------------|---|
| BODY SEAL (4) | 1 | ITEMS #1-4 & 8 INCLUDED IN SEAL KIT: 280501001 |
| SHAFT SEAL | 2 | |
| THRUST WASHER | 3 | |
| COMMUTATOR SEAL | 4 | |
| REAR HOUSING BEARING | 8 | |

MISCELLANEOUS KITS

| DESCRIPTION | EXPLODED VIEW ITEM # | KIT |
|-----------------------------|----------------------|-----------|
| BODY SEAL | 1 | 270018000 |
| FRONT HOUSING BEARING | 5 | 280018003 |
| FRONT THRUST BEARING | 7 | 280018001 |
| REAR HOUSING BEARING | 8 | 270018021 |
| REAR THRUST BEARING | 9 | 270018003 |
| WEAR PLATE | 11 | 270012000 |
| MANIFOLD | 13 | 270015007 |
| REVERSE MANIFOLD | 13 | 270015008 |
| COMMUTATOR | 14 | 270012001 |
| STANDARD ENDCOVER | 15 | 275016507 |
| 3/4" O-RING PORTED ENDCOVER | NOT SHOWN | 270016003 |

NOTE: EFFECTIVE NOVEMBER 9, 2009 THE STANDARD ENDCOVER THICKNESS WAS SHORTENED TO 19MM [.881 IN]. IF REPLACING A NON PORTED ENDCOVER WITH A THICKNESS GREATER THAN THAT, A STANDARD BOLT SET KIT NEEDS TO BE ORDERED ALONG WITH THE STANDARD ENDCOVER

ROTORS, DRIVE LINKS AND SPACERS, AND BOLTS

WHEN CHANGING MOTOR DISPLACEMENTS, A MATCHING DRIVE LINK KIT AND BOLT SET KIT MUST ALSO BE ORDERED.

| EXPLODED VIEW ITEM # | 12 | 12 | 10 | 16 | 16 |
|----------------------|--------------------|--------------------|----------------|--|--|
| DISPLACEMENT | STANDARD ROTOR KIT | FREETURN ROTOR KIT | DRIVE LINK KIT | BOLT SET KIT PORTED ENDCOVER OR STANDARD 40 MM [1.59 IN] | BOLT SET KIT STANDARD ENDCOVER 19 MM [.881 IN] |
| 040 | 270000040 | 270001040 | 270014010 | 270005040 | 275005040 |
| 045 | 270000045 | 270001045 | 270014010 | 270005045 | 275005045 |
| 060 | 270000060 | 270001060 | 270014009 | 270005060 | 275005060 |
| 070 | 270000070 | 270001070 | 270014008 | 270005070 | 275005070 |
| 090 | 270000090 | 270001090 | 270014007 | 270005090 | 275005090 |
| 100 | 270000100 | 270001100 | 270014006 | 270005100 | 275005100 |
| 130 | 270000130 | 270001130 | 270014001 | 270005130 | 275005130 |
| 160 | 270000160 | 270001160 | 270014005 | 270005160 | 275005160 |
| 200 | 270000200 | 270001200 | 270014004 | 270005200 | 275005200 |
| 230 | 270000230 | 270001230 | 270014003 | 270005230 | 275005230 |
| 320 | 270000320 | 270001320 | 270014002 | 270005320 | 275005320 |
| 400 | 270000400 | 270001400 | 270014002 | 270005400 | 275005400 |

HOUSING KITS

(EXPLODED VIEW ITEM #6)

| DESCRIPTION | HOUSING KIT |
|--|-------------|
| #A68 - 2-HOLE 1/2" BSP.F | 280013002 |
| #AC8 - 4-HOLE 1/2" BSP.F | 280013001 |
| #AG3 - 4-HOLE 1/2" BSP.F OFFSET | 280013003 |
| #A63 - 2-HOLE 1/2" BSP.F OFFSET MANIFOLD | 280013005 |
| #AC3 - 4-HOLE 1/2" BSP.F OFFSET MANIFOLD | 280013004 |

SHAFTS AND RELATED COMPONENTS KITS

SHAFT KITS COME WITH RELATED SHAFT COMPONENTS (i.e. keys, nuts, etc.) TO ORDER INDIVIDUAL KEYS, USE THE KEY KIT NUMBER.

| EXPLODED VIEW ITEM # | 22 | 23 |
|----------------------|-----------|-----------|
| DESCRIPTION | SHAFT KIT | KEY KIT |
| #21 - 32MM STRAIGHT | 280011001 | 500449103 |

White Drive Products, Inc. Phone (270) 885-1110 Fax (270) 886-8462

REV. 3.16.10